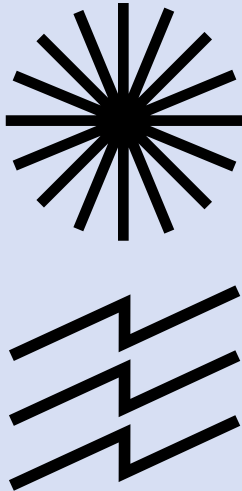


**The
Sheffield
College**

CLICK
HERE 

to discover more
about studying
these subjects
with us!

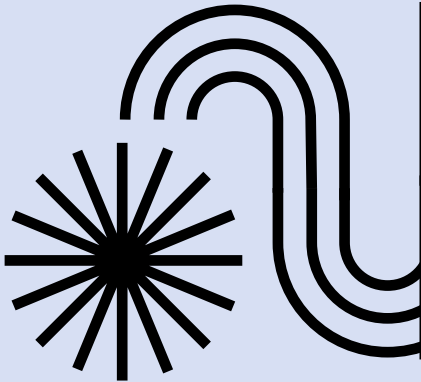




ESOL

Welcome to
ESOL /

WHAT CAN I STUDY?



**CLICK
HERE**

to read more
about each
of our study
programmes
and their entry
requirements!

ENGLISH FOR SPEAKERS OF OTHER LANGUAGES (ESOL)

English for Speakers
of Other Languages
(16 – 18)

- C
- H
- F



Campus key: **C** City **H** Hillsborough **F** Fir Vale



WHAT SKILLS WILL I LEARN?

Our qualifications will help you to improve your English skills in:

SPEAKING

- ✻ Asking questions
- ✻ Talking about yourself
- ✻ Having conversations with other people
- ✻ Listening
- ✻ Understanding what others are saying to you

READING

- ✻ Reading letters
- ✻ Understanding directions and instructions
- ✻ Other things you may see in a daily environment

WRITING

- ✻ You will learn how to write a properly constructed sentence and short paragraph



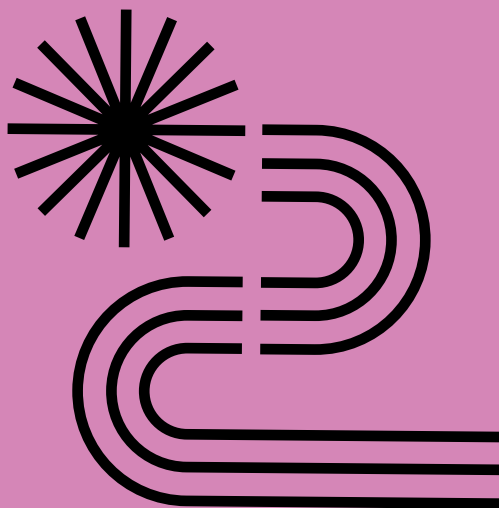
WHERE?

Our students can study at our City, Fir Vale or Hillsborough Campuses, and regularly go on trips to Sheffield and nearby cities and towns.

WHAT NEXT?

After you have completed your first ESOL qualification you will be able to progress and develop your English, maths and digital skills even further.

You will then be able to study for the career of your choice at The Sheffield College, gaining the qualification and skills for university or employment.



APPLY

1.

VISIT

www.sheffcol.ac.uk/courses

2.

CHOOSE

what you want to study

3.

CLICK

'Apply now'

4.

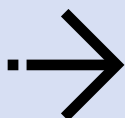
CREATE

an application account

5.

COMPLETE

and submit our application form



CLICK HERE

to start the application process

CLICK HERE

to book your place at an Open Day