

The Sheffield College



**A Guide to University Level
and Professional Courses**

2019/20

Contents

Welcome from the Chief Executive and Principal	6
Open Days	8
Why study with us?	10
Sheffield	12
Making the most of your time	14
Teaching	16
Facilities	18
Campuses	20
Making you employable	22
Our courses explained	24
Student support	28
Money	30
Paying it back	32
Financial Hardship Fund	34
How to apply	36
Our partners and awarding bodies	40
Courses	43

Welcome

Nowadays, there is a choice of study routes to help you achieve career success.

The Sheffield College offers an exciting range of university level courses and we are proud of our reputation in this area.

Around 500 students complete full-time and part-time university level and professional courses with us every year which are recognised by universities, employers and professional bodies.

The qualifications include full honours degrees, foundation degrees, higher national diplomas and certificates.

They enable our students to develop industry relevant knowledge and skills to move into a new career, or progress in an existing one.

There are also exciting opportunities to complete a Higher Apprenticeship if you want to earn as you learn by training with an employer in the workplace whilst studying at college.

Not all students, therefore, have to go on to university to benefit from a high quality higher education experience.

What's more, if you study a university level qualification at the college you also benefit from lower tuition fees, smaller class sizes and expert support.

Our university level qualifications are also designed to meet the needs of employers and can be completed full-time or part-time to fit in with family and work commitments.

We provide a friendly and supportive atmosphere with some great facilities including two children's nurseries.

So why not get in touch to find out about course places and how we can support your career ambitions.



Angela Foulkes

Chief Executive
and Principal



This year we have Open Days
on the following dates:

THURS
25
OCT 2018

WED
21
NOV 2018

TUES
29
JAN 2019

MON
4
MAR 2019

From 4pm–7pm

Please note university level information will
be available at our **City** and **Hillsborough**
Campuses only.

**We want you to
see for yourself!**

Open Days

We hold Open Days throughout the year
where you'll have the opportunity to:

- meet the people who'll be teaching you and have a chat about what the course involves
- tour our fantastic facilities and see where you'll be learning
- find out more about how to travel to our campuses, including our excellent bus, tram and rail links
- speak to our job experts about the careers that you're interested in and what you need to do to get there
- have a look at some examples of the work you'll be doing on your course
- see where you'll be spending your spare time on campus, including our Lavazza coffee shops, refectories, Revive beauty salon and The Silver Plate restaurant
- get the chance to look at our sports team and enrichment offer
- speak to our Student Support team about your options

**We look forward
to meeting you.**

Head to **www.sheffcol.ac.uk/open-days**
to book your place today



Why study with us?

There's a pretty big misconception about getting a university level qualification; you have to go to university to get one. Quite simply, that's not true.



At The Sheffield College we offer you the opportunity to study a university level course in a wide range of subjects, with more and more students choosing to do so each year. All of our courses are validated by leading universities, including Sheffield Hallam University and The Open University.

Here are just a few of the other reasons you should choose us:

Top class tutors

Our tutors haven't always been teachers! They have lots of experience working in their chosen industry, so you really are learning from people who have done the job you want.

Small class sizes

Our class sizes are far smaller than at some of the traditional universities, which is great news for you. You'll receive more contact time with your tutor plus one-to-one support maximising your chance of university level success.

Wide range of career driven courses

With courses in everything from Graphic Design and Policing, to Performing Arts and Construction, we have something for just about everyone. Better still, all of our courses have a focus on giving you the specific skills you need to be employed and successful in your chosen industry.

We cost less

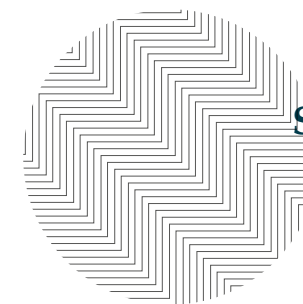
University fees have been in and out of the news since the tuition fee price hike. You will graduate with less debt than at traditional universities. Our tuition fees will save you around £3,000 a year.

City on your doorstep

Whether you're new to Sheffield or not, our location is perfect! If you currently live in Sheffield there's no hassle or cost involved in moving to study - perfect if you're retraining, want to stay at home or have a family. Alternatively, if you're new to the city, our campuses are all a stone's throw from the city centre and have excellent transport links.

Access to the university experience

If you are studying a Sheffield Hallam University validated course, you will have access to their libraries and Students' Union.



So, what are you waiting for?

Pop along to one of our Open Days (details on page 8) to have a look for yourself or get in touch today at info@sheffcol.ac.uk to find out more



Sheffield

Sheffield; the Outdoor City, the Steel City. Where industry meets scenery. Greenery meets factory. A city built on the heritage of steel manufacture during the industrial revolution. Awash with reminders of its industrial background, steeped in history.

Yet one of the greenest cities in Europe with over 200 parks, botanical gardens and the same amount of green space as Brazil. Just a short ride and you are in the idyllic Peak District presenting unrivalled opportunities to climb, cycle, walk and run. Get away from the hustle and bustle, clear the mind.



Sheffield really is that diverse!

You'll already know about our fantastic reputation as a music city. Think Arctic Monkeys, think Tramlines – our city music festival at Hillsborough Park – and think over 70 gig venues, including NME and BBC 6 Music favourite The Leadmill.

What you might not know about Sheffield, however, is our ever-increasing reputation as a local city. In keeping with history, old factories have been converted into independent shops, restaurants and bars, gig venues and accommodation. Coffee shops and bakeries, record stores and cinemas are located all over the city, from Kelham Island up to Division Street and across to Abbeydale Road.

But obviously we have all of your favourite brands here too. Most of them live at Meadowhall Shopping Centre or in our vibrant city centre which is currently undergoing a huge transformation.

Such an esteemed music industry and thriving independent scene brings a fantastic nightlife. You'll never be short of something to do. There are student nights throughout the week at The Leadmill, Plug and Corporation lasting way into the night, with street food markets and food festivals perfect for curing your sore head!

Want to get the university halls lifestyle?

Sheffield has also recently been touted as the real ale capital of the world. We have over 57 breweries and some of the finest pubs in the region, so why not sample some of our local tipples?

As lovely as we are, we are also a bit competitive. Sheffield United and Sheffield Wednesday battle it out for the city's best football team, whilst we're also home to rugby (league and union), ice hockey and netball teams. It's hardly surprising the city is producing champions such as Jessica Ennis-Hill, Jamie Vardy, Danny Willett and Joe Root - with Anthony Joshua choosing to train at Sheffield's English Institute of Sport.

With all this and more going on, it's no wonder Sheffield is one of the best destinations for students in the UK. The relatively cheap cost of living compared to the rest of the country, fantastic job opportunities and all of the above makes Sheffield the perfect student destination. It's hardly surprising that a high percentage of graduates choose to stay in Sheffield when they finish.

All of our university level students are eligible to apply for accommodation in Sheffield Hallam University halls. This means that if you want the student experience without the higher course fees of a traditional university, we can give it to you.

Go to www.sheffcol.ac.uk/student-support/hall-accommodation for more information on how to apply for halls nearby.

Making the most of your time

We know that your time with us isn't just about getting a university level qualification. The university lifestyle is hugely important. You want more, expect more and we're here to give you more. It's all about opportunities.

We have a wealth of activities to complement your course experience, all of which sit under our extra-curricular programme. We want to further improve the quality of your time here through societies and clubs, trips and activities.

With that in mind, here are a few examples of some of the things you can do with us:

- ✓ Keep yourself fit and healthy with free access to our gym facilities
- ✓ Join a club or a society. We have all sorts going on from Chess to Bee-keeping, Fitness to Music, but we're more than happy for you to set one up yourself – just ask
- ✓ Everyone loves a good trip. In the last couple of years we've put on trips to New York, Florence, Berlin, Amsterdam, Beijing, London and lovely old Whitby
- ✓ Hire out our sports halls and all-weather 3G pitches
- ✓ Be a part of your Students' Union and have a say in all pressing educational and social matters. Your Students' Union regularly organises events for you to get involved in
- ✓ Fancy yourself as an entrepreneur? We have enterprise clubs and activities aplenty to help develop, and nurture the skills employers desire, and perfect your CV

Please note: some trips may incur extra costs



To find out more about what we can offer you during your time with us; please visit www.sheffcol.ac.uk/college-life/enhance



Teaching

Insight, knowledge, passion and commitment. Real industry experts.

Our tutors are all about you. It's their job to support you through your qualification by offering one-to-one support when you need it – something that isn't easily accessible at universities.

You'll be taught through various methods, including lectures, seminars, tutorials and independent study. This will depend on the type of course you study to help you get the most out of your time with us. You might also conduct fieldwork, small-group work and take part in group projects. As our courses have a strong employer focus, we work hard to find you relevant work placements, and the opportunity to work on live and simulated projects with some of our employers.

Many of our excellent teaching staff have worked, or are still working, in the industry that you are trying to break into. That means they can share valuable knowledge and experiences with you, including what to expect when you qualify, what problems you might experience and how to overcome them.

This experience is invaluable to your progression and their passion for the industry gives you a fantastic advantage when it comes to applying for a job.

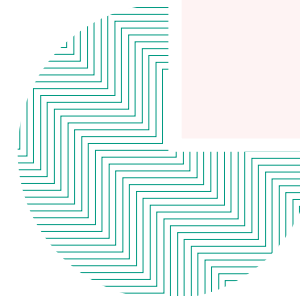


"The tutors and support staff gave me the knowledge of film and confidence to embrace my artistic nature which enabled me to go ahead and create my career path."

I am currently working as a film distributor in Krakow, Poland. This is my ideal career and something I've worked incredibly hard to achieve. The level of dedication and commitment from tutors at The Sheffield College has helped me land my dream job."

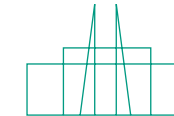
Samuel Summers

Former creative media practice student



Facilities

We feel proud to say that our facilities rival not only the local colleges, but also some of the top universities in the country.



"I came to The Sheffield College to study Level 7 Strategic Management and Leadership as I needed to undertake that specific qualification for my role as a business manager.

I enjoy the diversity of my role and the challenges of working within a fast-paced, public sector service environment. This qualification has provided me with a useful toolkit of skills and knowledge, which has complemented my experience in the role."

Claire Hague

Former leadership and management student



We've invested over £14 million in our campuses over the past few years to ensure that we're offering our students the very best experience possible. We have worked closely with local employers so that our facilities replicate the ones you'll be working in one day. You'll complete your qualification using the best equipment, in the best surroundings, and leave us full of confidence and experience.

The Sheffield College has four main campuses across the city: City, Hillsborough, Peaks and Olive Grove. As a university level or professional student you'll be studying at our City, Olive Grove or Hillsborough Campuses, or with your employer.

We've invested over £14 million in our campuses in the past few years.



Campuses



City Campus Granville Road, S2 2RL

The Sheffield College City Campus is a great place to be; perfectly located just a 10 minute walk from the city centre and just 5 minutes from the train station.

Facilities here include: The Diner (complete with outdoor terrace and unbeatable views of the city), plane cabin for our aviation students, our award-winning restaurant The Silver Plate, training kitchens, Revive hair and beauty salon, science and dental labs, a sports hall, high-tech childcare teaching facilities, construction workshops, veterinary labs, libraries, computer suites, and a children's nursery which is available to students needing childcare.

Many students study catering at City so there's always something delicious on the menu from our healthy takeaway 'Grab n Go', our student-run restaurant The Silver Plate or perhaps something from our fresh bakery shop. You'll also find our business students running regular enterprise markets over lunchtime.



Olive Grove Campus Olive Grove Road, S2 3GE

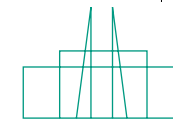
Olive Grove has recently undergone a major investment to provide students with new industry-standard workshops, a Learning Resource Centre, new classrooms and a canteen.

Olive Grove is the place to study all things engineering; from electrical and electronic, to mechanical and manufacturing – with all the latest machinery and CAD software on-site.

The college has a dedicated motor vehicle workshop with a tyre fitting machine, wheel balancing machines and car ramps. Alternatively, you can

specialise in body repair and re-spraying of vehicles. Plumbing, electrical installation and gas fitting are also based at Olive Grove.

Don't just take our word for it, come and see for yourself at one of our Open Days. You'll find the details on page 8.



Hillsborough Campus Livesey Street, S6 2ET

Our Hillsborough Campus in the north of the city is our creative hub with art and design, photography, media production and music all based at the campus, alongside more traditional study programmes such as A Levels, and our sport and public services offer.

The facilities at Hillsborough really have to be seen to be believed. From Mac suites to sprung floor dance studios, performance theatres, recording studios, music suites and a TV studio, it really is a creative hub.

Hillsborough's not just for those who are confident on the stage or in front of the camera though. It also has stage production workshops for set design and prop-making, and a wire tension grid which provides a strong, safe and virtually invisible platform for lighting changes to be made.

Hillsborough has a gym, a 3G sports pitch and a sports hall which are available for all to use.

We also offer business, science and health and social care here.

If you need childcare, no problem. The Hillsborough Campus also has an Ofsted rated 'Outstanding' nursery on-site.

Making you employable

We have one very simple aim – to make you employable when you finish your qualification. Not just employable, we want employers fighting over you.

To do this, we know that our courses must focus on giving you industry knowledge that'll make you stand out when you go for an interview. Our university level qualifications include masterclasses by professionals, visits to the workplace, opportunities for work experience and mentoring, work on projects set by employers, and opportunities to exhibit work or make presentations. Exactly the types of things employers want to see on your CV.



"At school I was always interested in design and maths, and knew I wanted to do something that combined the two. I chose The Sheffield College because the graphic design course was exactly what I was looking for.

The support I received from my tutors was excellent and I went on to study for my Foundation Degree in Graphic Design at the college too. The tutors organise an end of year show/exhibition for all students where local employers can come to look at your work and I was fortunate to be headhunted by a number of local design agencies as a result of the show. I now work as a Creative Developer at Peter and Paul, building and designing websites."

Tom Smedley

Creative developer and former graphic design student



"I decided to study for my Foundation Degree in Sports Coaching at The Sheffield College because I was excited about the opportunities it held for me. I couldn't have been more right.

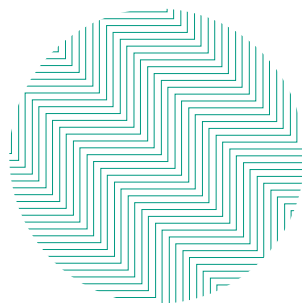
The tutors supported me every step of the way and helped to open doors that wouldn't have been available had I gone elsewhere. Not only was there support with my sports studies, but the college also has an enterprise programme to help teach you the skills you need to set up your own business.

The staff helped myself and two other students set up a business that we were passionate about (increasing opportunities for disabled people in sport). Currently this has been a great success and we work in partnership with Sheffield Wednesday Football Club and The FA."

Andrew Hibberd,

Former sport coaching student

Our courses explained



There are a few different ways to study for a university level qualification. Anything Level 4 and above is higher education; with a Level 6 qualification being a full honours degree or top level professional qualification. To avoid complication, here they are broken down for you:



Higher National Certification (HNC)

A HNC is a Level 4 vocational qualification which gives you the skills and knowledge for a particular job. They are highly valued by employers, work-specific, and are recognised when applying for membership of professional and industry organisations. It typically takes one year to complete when studied full-time (or 18 months part-time).

Higher National Diploma (HND)

Like the HNC above, the HND is a vocational qualification but at Level 5. A HND can typically be studied full-time over two years or part-time over three years. If you have a relevant HNC qualification, your HND will only take one year to complete (full-time). Can often be used to gain entry to university for a related course.

Foundation Degree

A Foundation Degree equips you with up-to-date workplace knowledge, skills and experience to further your chosen career. Lasting two years, it's roughly equivalent to your first two years at university and a Level 5 qualification.

Top-up Degrees

Upon completion of your HND or Foundation Degree you can, as the name suggests, top-up your existing qualification to Bachelor's Level 6 (full Bachelor's Degree). This is essentially the final year of university.

Please check your course can progress onto a top-up prior to starting.

Bachelor’s (Honours) Degrees

A Bachelor’s (Honours) Degree is a three or four year course studied at undergraduate level and a Level 6 qualification.

Postgraduate Certificate (PGCE)

If you’d like to pursue a career into teaching you can study a Level 7 PGCE or Certificate in Education.

Higher Apprenticeships

A Higher Apprenticeship is a nationally accredited work-based programme designed to meet employers’ needs at higher skill levels, and includes qualifications at Level 4 and 5. You will gain a recognised professional qualification (equivalent to the first year at university), technical knowledge and professional skills, as well as wider business competencies and that all important work experience.

Degree Apprenticeships

A Degree Apprenticeship is the next level up from a Higher Apprenticeship but allows you to gain a full Bachelor’s (Level 6) qualification. Our Apprenticeships are designed in partnership with employers and provide invaluable work experience, as well as study.

Professional courses

These courses range from Level 3 to 6 and help you to boost your CV, progress in the workplace and can often provide you with professional body recognition in your area.

Level	Course type	Typical entry requirements	Progression
4	HNC	BTEC National Certificate, Level 3 Diploma or equivalent (inc. A Levels) in a relevant subject. Experience gained at work may qualify	HND Employment
5	HND	HNC	Employment Top-up Degree
	Foundation Degree	Between 48-64 UCAS points Level 3 Diplomas and work experience considered on an individual basis for mature entrants or those not coming straight from school/college C/4 or above in GCSE Maths and English Language preferred but not essential for all courses	Employment Top-up Degree
6	Bachelor’s Degree	Please see individual course requirements A minimum grade C/4 in English Language is required	Employment Postgraduate Certificate
	Top-up	Applicants must have successfully completed a Foundation Degree or HND, and provide a supportive reference	Employment Postgraduate Certificate
7	Postgraduate Certificate (PGCE)	Relevant Bachelor’s (Honours) Degree	Career in teaching

Please refer to individual courses for specific entry requirements. This is just a guide.

Want to study a university level course but haven’t got the qualifications to get started?

In just one year, our access to university level courses will help you gain the UCAS points you need to go on to study your degree. Contact **info@sheffcol.ac.uk** to find out more.

Student support

Studying for a university level or professional course can, at times, be tough. A bit stressful. A lot of work. At The Sheffield College we have a dedicated Student Support team on hand to make your time with us as easy, stress-free and enjoyable as possible.

Our Student Support team are committed to doing everything they can to help ease your problems, stresses and concerns, and are on hand with advice and guidance on a number of issues, including:

- | | |
|-----------------------------------|--|
| ✓ accommodation during your study | ✓ travel to and from The Sheffield College |
| ✓ childcare | ✓ tuition fees and finances |
| ✓ personal issues | |
| ✓ disabled access and support | |
- Our Learning Resource Centres are open for loaning an ever-growing collection of books, DVDs, journals, audio, visual and electronic resources to support you with your study. You can also borrow specialist equipment from your department.



"Every single tutor who taught me during my time at college are in many ways the very reason I am telling this story.

Without their support and their belief in me, I would probably have never managed to have achieved what I achieved at the college.

My time at The Sheffield College truly was a life changing experience and I look back on it as the reason that I am where I am today. If it was not for the staff who taught me throughout my five years there, I really would not be about to progress on to a Masters and hopefully achieve the career aspirations I have in mind. The college taught me that if you are the hardest worker in the room and have the belief to be successful, you will make it no matter what you are going through right now."

James
Former policing studies student

Money

“When you’re a student,
every little counts, so it’s
worth looking at your
options carefully”

– Former student



Our tuition fees are less than traditional universities but that doesn’t mean you’re not entitled to financial support. Support can be easily accessed from The Student Loans Company for any of our university level courses.

Support can be accessed for tuition fees and personal maintenance. If you apply for tuition fee support, The Student Loans Company will pay your course tuition fees directly to us, removing the hassle of you having to deal with any payments. Take a look at the next page for repayment information.

You may also be eligible for a maintenance loan to help cover your living costs whilst studying, whether you stay at home or move out. How much you receive will be dependent on your household income/ income of your parents.

You may also be eligible to apply for a support grant. Please see the Student Finance website for more details.

Part-time courses differ slightly but for more information about all things Student Finance, eligibility and how much you may be entitled to, please visit www.gov.uk/student-finance or contact us at info@sheffcol.ac.uk



Paying it back



Paying back your tuition fees and loan might sound a bit scary, but it really isn't.

Repayments work like this; you only start paying your loan back when you earn more than £25,000 a year – and that's not until the April after you finish. Once you go over the threshold you will pay back 9% of your income.

The money comes out of your wages before you'll have chance to notice, or spend it!

Think about it, if you earn £27,000 a year you'll only pay back £15 a month. Not bad at all. Oh and one last thing; if you have previously taken out a 19+ Advanced Learner Loan for a recognised Access to HE course, the balance will be written off upon completion of a full degree! *

If you want to discuss your financial options with us further, please give our University Centre a call on **0114 260 2600** for more information. You can also go to **www.gov.uk/student-finance** for independent financial advice.

*subject to eligibility

Course costs



Year	Course type	Cost	Notes
2019/20	Full-time	£6500 (per year)	Please note part-time study fees are calculated individually. Please get in touch for more information.

You can find out more about the loans and financial options available to you by visiting the Student Finance website at **www.gov.uk/student-finance**



Financial Hardship Fund

Should you find yourself struggling for money during your university level course, you may be entitled to support from our Financial Hardship Fund. You can use the fund to ease any financial concerns allowing you to concentrate on your course.

Please don't think that anything is too little or too much, each application we receive will be assessed on an individual basis. During the assessment process we will require a copy of your Student Finance England entitlement, and other supporting evidence such as bank statements or details of your rent.



You are not able to use this fund to cover tuition fees but you may be eligible if you are:

- ☒ a student with children, especially single parents
- ☒ a mature student with existing financial commitments
- ☒ from a low-income family
- ☒ disabled
- ☒ a student that was previously in care (a 'care leaver')
- ☒ homeless or living in a foyer

If your application is unsuccessful, we will endeavour to point you in the direction of alternative support.

Please speak to our Student Support team to find out more information or to submit an application.



How to apply

This is how it's going to work if you are applying for a HNC, HND, Foundation Degree, Bachelor's Degree or Top-up Degree. Remember, filling in your application accurately will save you time as we won't have to clarify information with you.

1 Register with UCAS

If you've not applied to university before, you'll need to register an account with UCAS (www.ucas.com). Fill in your personal details and give yourself a username, password and set some security questions (in case you forget your login). Please note if you are a current student with us, you'll need to input a buzzword. Ask your current tutor for this.

2 Log in and complete your personal details

Add to the above personal details by stating your funding options, whether you have any special needs or disabilities, or any criminal convictions. At this stage you'll verify your email address and have the option to add a parent, guardian or adviser who can speak to UCAS on your behalf.

3 Fill in additional information

UCAS will ask you to fill out things like your ethnicity, what jobs your parents do and if you've attended any summer schools. This information is just for UCAS statistics.

4 Student Finance

If you've indicated you'll need help funding your course, you can fill out this page which gives UCAS permission to share details with Student Finance England making the whole process a lot easier and a lot faster.

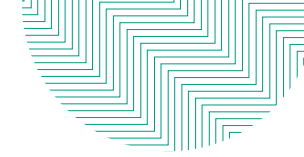
5 Enter your course choices

Apply for up to 5 courses with The Sheffield College. You'll find our courses and their codes on our website.

6 Complete your education history

Make sure you input all your qualifications: GCSEs, Functional Skills, A Levels, BTECs etc. If you're awaiting your results, make sure you put that qualification down as result 'pending'.

See the next page for the final steps...



7 Employment history

At The Sheffield College we value your personal development. In this section you get to list any full-time or part-time jobs you've had, including descriptions of those jobs. Don't worry about voluntary or unpaid work yet, save that for your personal statement!



8 Write your personal statement

Your chance to sell yourself and show off your skills. Tell us why you're applying to The Sheffield College, your ambitions and what interests you about the subject. It's worth telling us what makes you suitable – any relevant skills, experience and achievements gained from education, work or other activities (including hobbies).

Remember though, you have a 4,000 character and 47 line limit. Keep an eye on your word count and make it concise!



9 Check it through

Give your application a once over. Make sure you've completed and saved every section, and are happy with your personal statement. When everything is marked as complete, read and agree to the declaration which will allow you to move to the final sections.



10 Get a reference, pay and send off

This can be from a former teacher, tutor, adviser or professional. Anyone who knows you academically.

Applications cost £13 (single course) or £24 (multiple courses).

Once you've paid, send it off to UCAS and keep an eye on the Track Portal which will keep you updated with the progress of your application.

You will receive alerts when:

- you're invited for an interview (course dependent)
- you receive an offer from us for your courses



Part-time, professional and Apprenticeship applications

If you are wishing to study part-time with us you'll need to apply through the application form on our website, or email info@sheffcol.ac.uk for a copy. Fill it in and send it back to us: The Sheffield College University Centre, Hillsborough Campus, Sheffield, Livesey Street, S6 2ET.

Professional courses, Higher and Degree Apprenticeships can be applied for via our website.

We look forward to hearing from you.

Our partners and awarding bodies

We work with carefully chosen, prestigious university partners and awarding bodies to develop, approve and provide certification for our courses. These partners have approved the quality of our provision and facilities, together with the student experience we provide. We work together with our partners to continuously enhance our courses and your experience. We currently work with:

✓ The Open University



✓ Sheffield Hallam University



✓ University College Birmingham



✓ BTEC



✓ Pearson



When you successfully complete your course you will receive your certificate from the partner who validates your award. The name of the partner for your course can be found under course information.

The Sheffield College is approved by The Open University as an appropriate organisation to offer higher education programmes leading to Open University validated awards.



Courses

Animal Care	44
Business and Professional Services	46
Catering and Hospitality	50
Civil Engineering	52
Computing	54
Construction	56
Design and Visual Arts	58
Education	62
Engineering	64
Floristry	68
Hair and Beauty	70
Health and Social Care	72
Legal	74
Media, Journalism and Photography	76
Music and Performing Arts	80
Science and Dental	84
Sport	86
Uniformed Public Services	88
Higher and Degree Apprenticeships	90
Professional Courses	91

Animal Care



HND Animal Management

- > This course provides opportunities for students to concentrate on the development of higher-level skills in a land-based context and learn how their role, and that of their business, fits within the overall structure of the land-based industries, the national and international economy, and the global overview.

This qualification equips individuals with the knowledge, understanding and skills for successful employment or progression to further study. The course also provides opportunities for specialist study relevant to individual vocations and contexts.

Core modules include: Business Environment, Animal Husbandry, Animal Health and Welfare, and Animal Nutrition. There are also a number of specialist modules available.

Course type: Full-time **Validated by:** Pearson

Level	Course	Career ideas
5	HND Animal Management	Veterinary Nurse Animal Behaviourist Zoo Keeper Animal Welfare Officer

Business and Professional Services



Level	Course	Career ideas
5	FdA Business Leadership and Management	
	BA (Top-up) Management (Business)	Business Management Business Development Officer Charity Fundraiser
6	BA (Top-up) Management (Events)	Marketing Executive HR Director Event Planner
	BA (Top-up) Management (Sport)	

FdA Business Leadership and Management

- > Providing the knowledge and understanding of how businesses are set up, operate and are managed, this course will develop confident leaders with effective interpersonal, communication and problem-solving skills.

Successful completion of the course will provide students with the knowledge to pursue careers in business, set-up a business or continue to top-up to Honours Degree level.

Modules include: Economics for Business, Personal and Professional Development, Managing People, Financial Decision Making, Marketing a Product, Business Law, Business Strategy, Leading and Managing Change, Managing eBusiness, Leading and Managing a Project, Global Perspectives, Ethics and Research.

Course type: Full-time **Validated by:** Sheffield Hallam University

BA (Top-up) Management (Business)

- > This exciting, one year top-up course aims to develop specialist knowledge and a broad understanding of the global, national, regional and local business environment.

Graduates will develop skills to enable them to work within the global management environment. Students will study modules with students on the Top-up Management (Events) and Top-up Management (Sport) courses, as well as following a pathway module.

Modules include: Organisational Psychology, Strategic International Management, International Marketing, Minor Research Project, Major Project.

Course type: Full-time **Validated by:** The Open University

BA (Top-up) Management (Events)

- > This exciting, one year top-up course aims to develop specialist knowledge and a broad understanding of the global, national, regional and local events business environment.

Graduates will develop skills to enable them to work within the global management environment. Students will study modules with students on the Top-up Management (Business) and Top-up Management (Sport) courses, as well as following a pathway module.

Modules include: Creativity and Enterprise in Events, Strategic International Management, International Marketing, Minor Research Project, Major Project.

Course type: Full-time **Validated by:** The Open University

BA (Top-up) Management (Sport)

- > This exciting, one year top-up course aims to develop specialist knowledge and a broad understanding of the global, national, regional and local sport business environment.

Graduates will develop skills to enable them to work within the global management environment. Students will study modules with students on the Top-up Management (Events) and Top-up Management (Business) courses, as well as following a pathway module.

Core modules include: Innovation for Sport, Strategic International Management, International Marketing, Minor Research Project, Major Project.

Course type: Full-time **Validated by:** The Open University



Catering and Hospitality



Level	Course	Career ideas
5	FdSc Bakery and Patisserie Technology	Food Technologist Food Production Patisserie Chef Senior Baker



FdSc Bakery and Patisserie Technology

- > Developed in consultation with industry, this course develops the practical skills, technical ability and business knowledge needed for success in a creative, rewarding and challenging industry.

Whether you want to start your own business baking artisan breads, become a chocolatier or patissiere, or work in food technology or new product development, you will develop the high-level technical and operational skills required.

Modules include: Artisan Bread, Bakery and Confectionery Science, Food Safety and Hygiene, Specialist Confectionery, Introduction to Patisserie, Managing for a Profit, Advanced Confectionery and Chocolate, Contemporary Bread Production, Food Production Management, Quality Management Systems, Contemporary Patisserie, Enterprise Start-up Studies and New Product Development.

Course type: Full-time **Validated by:** University College Birmingham

Civil Engineering



Level	Course	Career ideas
4	HNC Construction and the Built Environment (Civil Engineering)	Structural Engineer Surveyor Civil Engineer
5	HND Construction and the Built Environment (Civil Engineering)	

HNC Construction and the Built Environment (Civil Engineering)

- > This two year, part-time broad-based course develops knowledge and understanding of a wide range of subjects, learning and study skills appropriate to higher education.

Communication, study and analytical skills will be developed through a wide range of assignment tasks, practical sessions and project work. The course is recognised by several professional bodies, including The Chartered Institute of Highways and Transportation, and the Institute of Civil Engineers. Successful students can progress to our one year, part-time HND Construction and the Built Environment (Civil Engineering) course.

Modules include: Individual Project, Construction Technology, Science and Materials, Construction Practice and Management, Construction Information (Drawing, Detailing, Specification); Maths for Construction; Principles of Structural Design.

Course type: Part-time **Validated by:** Pearson

HND Construction and the Built Environment (Civil Engineering)

- > This one year, part-time broad-based course is designed to give students the technical knowledge and skills required by a higher technician in the industry. This course is a progression route from the HNC.

Students will develop knowledge and understanding of a wide range of subjects and further develop communication, study and analytical skills through a range of assignment tasks, practical sessions and project work. The qualification is recognised by several professional bodies, including The Chartered Institute of Highways and Transportation, and the Institute of Civil Engineers.

Modules include: Advanced Structural Design, Group Project, Further Maths for Construction, Geotechnics and Soil Mechanics.

Course type: Part-time **Validated by:** Pearson

Computing

Level	Course	Career ideas
4	HNC Computing	Programmer Software Development Professionals IT Specialist Manager



HNC Computing

> This course is designed to develop students as professional, self-reflecting individuals who are able to meet the demands of employers in the computing industry with the ability to adapt to a constantly changing world.

Students are offered a broad introduction to the subject area via a mandatory core of learning, while allowing for the acquisition of skills and experience through the selection of optional units across a range of occupational sectors.

The course will be taught using Cisco Packet Tracer for the Networking Unit, and Access and SQL for the Database Design and Development unit. Website Design and Development will be one of the optional units taught.

Upon completion of the HNC in Computing, students can progress and top-up their qualification to a HND in Computing in year 2 of the course.

Modules include: Programming, Networking, Professional Practice, Database Design and Development, Security, Managing a Successful Computing Project, plus two optional units.

Course type: Full-time **Validated by:** Pearson

Construction

Level	Course	Career ideas
4	HNC Construction and the Built Environment	Construction Site Manager Building Surveyor Facilities Manager
5	HND Construction and the Built Environment	Sustainability Officer Environmental Surveyor



HNC Construction and the Built Environment

- > This two year, part-time course will develop knowledge and understanding of a wide range of construction subjects.

Communication, study and analytical skills appropriate to higher education will be developed through learning and study skills. The qualification is recognised by several professional bodies, including The Chartered Institute of Building and The Royal Institute of Chartered Surveyors. Successful students can progress to our one year, part-time HND Construction and the Built Environment course.

Modules include: Individual Project, Construction Technology, Science and Materials, Construction Practice and Management, Legal and Statutory Responsibilities in Construction, Construction Information (Drawing, Detailing, Specification); Surveying, Measuring and Setting Out.

Course type: Part-time **Validated by:** Pearson

HND Construction and the Built Environment

- > This one year, part-time course is a broad-based course designed to give students the technical knowledge and skills required by a higher technician in the construction industry. This course is a progression route from the HNC, two year part-time course taught at the college.

Students will develop knowledge and understanding of a wide range of construction subjects and further develop communication, study and analytical skills through a range of assignment tasks, practical sessions and project work. The qualification is recognised by several professional bodies.

Modules include: Civil Engineering Technology, Science and Materials, Principles of Structured Design, Mathematics for Construction.

Course type: Part-time **Validated by:** Pearson

Design and Visual Arts

Level	Course	Careers
5	FdA Creative Digital Practice; Creative Coding and App Development	Games Designer
	FdA Creative Digital Practice; Games Development	Senior Graphic Designer
	FdA Graphic Design	Animator
6	BA (Hons) Creative Practice (Top-up) Graphic Design	Digital Illustrator
		Creative Coder/ App Developer
		Fashion Photographer
		Social Media Executive

FdA Creative Digital Practice; Creative Coding and App Development

- > With tuition from experienced academic staff and high quality industry support, students will build the essential skills and knowledge required for programming and coding.
- Production skills and techniques vital to using creative technology will be developed, and a self-initiated project will allow students to build on existing skills and knowledge to carry out specialist research for a negotiated brief.
- Modules include: Games Studies, Ideation and Creative Problem Solving, 3D Games Engines, Digital Fundamentals, Practical and Technical Skills for Industry, User Interface, Group Project: 3D Games World Production, Advanced Coding Practice, Professional Practice, Self-initiated Project in Creative Coding and App Development.
- Course type:** Full-time **Validated by:** Sheffield Hallam University

FdA Creative Digital Practice; Games Development

- > This innovative course draws upon approaches which underpin professional practice and contemporary thinking.
- Experienced staff and high quality industry support ensure the course prepares students for employment, postgraduate study and/or self-fulfilment. As well as designing/developing a proposal document for a working production, a self-initiated project builds on existing skills and knowledge to carry out specialist research for a negotiated brief.
- Modules include: Games Studies, Ideation and Creative Problem Solving, 3D Games Engines, Games Design, Practical and Technical Skills for Industry, 3D Modelling and Texture Creation, Group Project: 3D Games World Production, 3D Animation, Professional Practice, Self-initiated Project in Games Development.
- Course type:** Full-time **Validated by:** Sheffield Hallam University

FdA Graphic Design

- > This course has a strong vocational and industrial focus. Students graduate with high levels of creative and professional skills, and knowledge and expertise derived from a curriculum that places emphasis on work-based learning experiences/practice.

Students will be equipped with the knowledge, understanding and skills required for success in the sector, or the opportunity for progression to further study.

Modules include: Introduction to Design, Visual Communications, Corporate Identity, Advertising and Promotion, Contextual Studies, Design in the Digital Environment, Graphics and Branding, Professional Design Project, Competition Projects, Preparation for Industry, Work-based Learning.

Course type: Full-time **Validated by:** Sheffield Hallam University

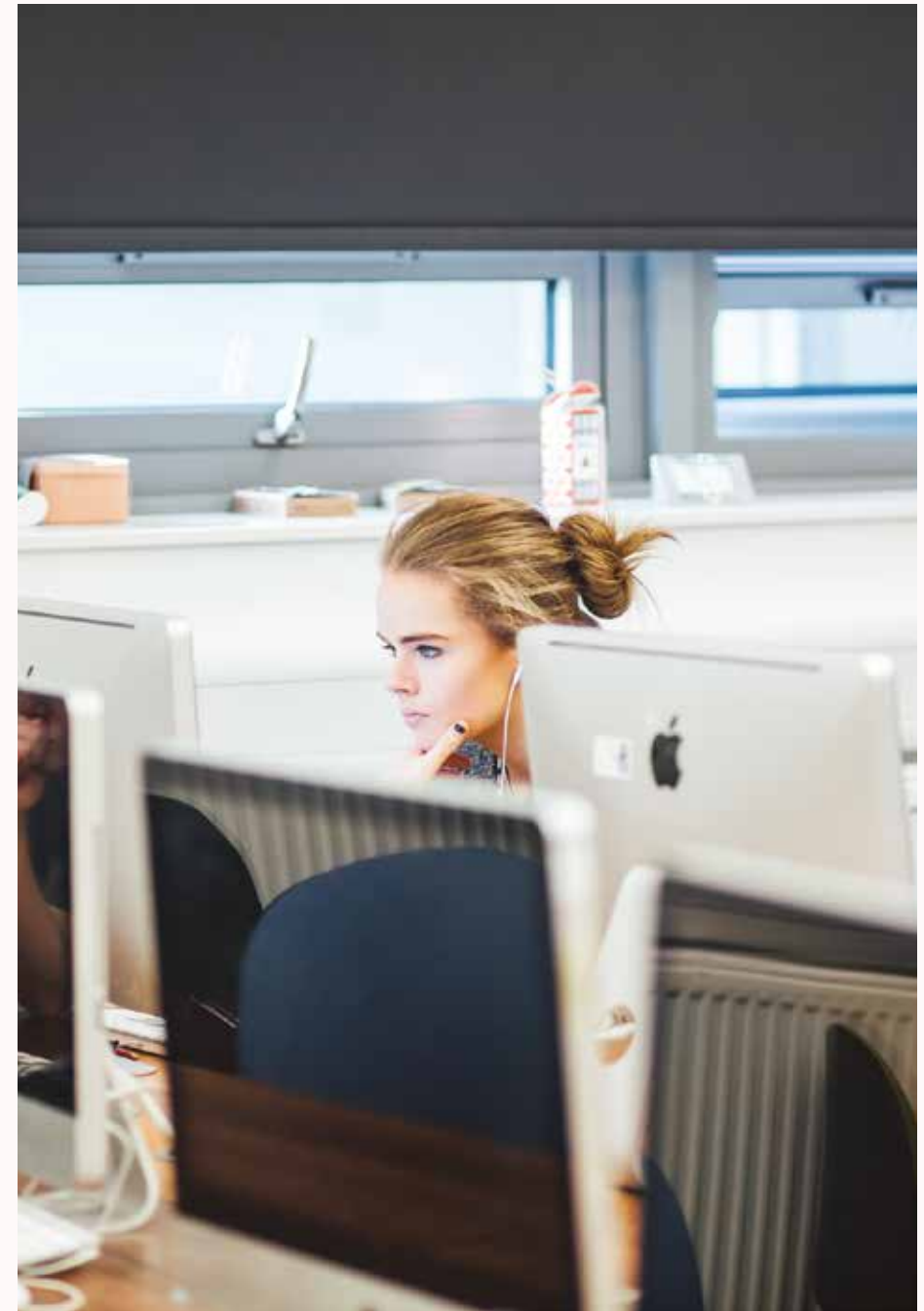
BA (Hons) Creative Practice (Top-up) Graphic Design

- > This course is aimed at students who wish to top-up their Foundation Degree to a full Bachelor's (Honours) Degree.

Students will have the opportunity to undertake a practical, industry-based creative project which may involve work-based learning, exhibiting work, business start-ups, self-promotion or internships, as well as writing research proposals for specialist projects you plan to undertake. Students will work towards the completion of a personal major practical project and professionally present work in an end of year exhibition to industry invited guests.

Modules include: Critical Studies, Creative Practice, Professional Development, Planning for the Major Project, Major Project.

Course type: Full-time **Validated by:** Sheffield Hallam University



Education



FdA Early Years Education

- > Designed to equip students with the skills to become a practitioner in the field of early years education, students will gain a detailed understanding of early childhood and the factors which impact upon, affect and influence it.

The course will help students to understand how children develop and learn, the theories that underpin practical work and develop skills to work with families. It also offers an insight into multi-agency work, developing key employability and transferable skills.

Modules include: Study Skills, Child Development, Play and Early Years Curriculum, Observation and Assessment in Professional Practice, Communication and Professional Relationships, Inclusive Practice, The National Curriculum, Theoretical Perspectives in Early Years, Promotion of Child Health – Research in Action.

Course type: Full-time **Validated by:** Sheffield Hallam University

Level	Course	Career ideas
5	FdA Early Years Education	Early Years Teacher Primary School Teacher Secondary School Teacher University/College Lecturer

Engineering



Level	Course	Career ideas
4	HNC in Engineering - Electrical and Electronic Engineering	Electrical Engineer Energy Engineer Engineering Design and Development Project Manager Maintenance Engineer
	HNC in Engineering - Manufacturing Engineering	
5	HND in Engineering - Electrical and Electronic Engineering	
	HND in Engineering - Manufacturing Engineering	

HNC in Engineering - Electrical and Electronic Engineering

- > Pearson Edexcel Higher Nationals are designed to provide a specialist vocational programme linked to professional body requirements and National Occupational Standards where appropriate.

The development of this two year course was informed by discussions/relevant publications from the Engineering Council UK (EC [UK]) and the Science, Engineering and Manufacturing Technologies Alliance (SEMTA). It offers a strong, sector-related emphasis on practical skills development alongside the development of requisite knowledge and understanding.

Core units include: Engineering Design, Engineering Maths, Engineering Science, Managing a Professional Engineering Project, Electrical and Electronic Principles, plus three optional.

Course type: Part-time **Validated by:** Pearson

HNC in Engineering - Manufacturing Engineering

- > This two year, part-time course is aimed at students who have already gained a Level 3 qualification in Manufacturing Engineering, A Levels in Maths and Science, or the required experience in the manufacturing engineering field.

HNCs consist of mandatory core units and specialist units. The specialist units are designed to provide a specific focus to the qualification. These specialist, vocational qualifications teach learners the key concepts and practical skills for direct progression to, or within, employment.

Core units include: Engineering Design, Engineering Maths, Engineering Science, Managing a Professional Engineering Project, Production Engineering for Manufacture, Quality and Process Improvement, plus two optional.

Course type: Part-time **Validated by:** Pearson

HND in Engineering - Electrical and Electronic Engineering

- > Pearson Edexcel Higher Nationals are designed to provide a specialist vocational programme linked to professional body requirements and National Occupational Standards where appropriate.

This HND is a one year course which students successfully completing the HNC Electrical and Electronic Engineering can top-up to. It aims to develop skills and techniques, personal qualities and attributes to equip individuals with the knowledge and understanding for successful employment in electrical and electronic engineering.

Electrical and Electronic Principles is the core unit, whilst specialist units include: Research Project, Professional Engineering Management, Further Mathematics, Industrial Power, Electronics and Storage, Industrial Systems, plus two optional.

Course type: Part-time **Validated by:** Pearson

HND in Engineering - Electrical and Electronic Engineering

- > Pearson Edexcel Higher Nationals are designed to provide a specialist vocational programme linked to professional body requirements and National Occupational Standards where appropriate.

This HND is a two year course. It aims to develop skills and techniques, personal qualities and attributes to equip individuals with the knowledge and understanding for successful employment in electrical and electronic engineering.

Electrical and Electronic Principles is the core unit, whilst specialist units include: Research Project, Professional Engineering Management, Further Mathematics, Industrial Power, Electronics and Storage, Industrial Systems, plus two optional.

Course type: Full-time **Validated by:** Pearson

HND in Engineering - Manufacturing Engineering

- > This part-time HND allows students who have already gained a HNC to top-up their qualification in just one year.

These specialist, vocational qualifications teach learners the key concepts and practical skills for direct progression to, or within, employment. The course is made up of core and specialist units which are designed to provide a specific focus to the qualification.

Core units include: Research Project, Professional Engineering Management, Manufacturing Systems Engineering, Lean Engineering, Advanced Manufacturing Technology, plus two optional.

Please note that some units may be subject to change. Should this be necessary, information will be made available immediately.

Course type: Part-time **Validated by:** Pearson

HND in Engineering - Manufacturing Engineering

- > This two year, full-time HND is aimed at students who have already gained a Level 3 qualification in Manufacturing Engineering, A Levels in Maths and Science, or have the required experience in the manufacturing engineering field.

These specialist, vocational qualifications teach learners the key concepts and practical skills for direct progression to, or within, employment. The course is made up of core and specialist units which are designed to provide a specific focus to the qualification.

Core units include: Research Project, Professional Engineering Management, Manufacturing Systems Engineering, Lean Engineering, Advanced Manufacturing Technology, plus two optional.

Please note that some units may be subject to change. Should this be necessary, information will be made available immediately.

Course type: Full-time **Validated by:** Pearson

Floristry



Higher Diploma in Floristry (ICSF)

> This Level 4 Floristry Diploma is aimed at experienced florists who aspire to, or who are already working at, management level within the floristry industry.

The course combines creative floristry techniques with business concepts and processes. Students will work on and develop their creative processes throughout the qualification, culminating in a design portfolio of around 35 technical designs. In addition, students will have opportunities to compete in national competitions and visit large-scale floristry events.

Key units: Botanical Concepts and Practices for Floristry, Historical Studies for Floristry, Floral Event Practices, Business Practices for Floristry, Marketing and Promotional Practices for Floristry, Technical Floristry Skills [Tied Designs], Technical Floristry Skills [Wired & Glued Designs], Technical Floristry Skills [Designs in Mediums], Technical Floristry Skills [Design Trends] and Design Concepts in Floristry.

Course type: Full-time **Validated by:** City and Guilds

Level	Course	Career ideas
4	Higher Diploma in Floristry (ICSF)	Floral Designer Shop Manager Senior Florist

Hair and Beauty



BA (Hons) Media Make-up and Hair Artistry

> This course offers a highly practical focus allowing students to develop specialist skills whilst also gaining a broad understanding of the industry.

It encourages development of innovative and creative ideas that meet professional standards, and the needs of the industry. An emphasis on creativity and practical skills allows students to be desirable practitioners and artists.

Modules include: Intro to Academic and Professional Development, Creative Make-up, Creative Hairstyling, Fashion, Haute Couture and Photographic Make-up, Period Make-up, Historical Hair Design, Freelance and Career Progression, Professional Practice, Media Make-up in Context, Specialist Skills in Hair, Showcase Event, Critical and Contextual Studies, Minor and Major Projects.

Course type: Full-time **Validated by:** The Open University

Level	Course	Career ideas
6	BA (Hons) Media Make-up and Hair Artistry	Make-up Designer Freelance Make-up Artist Make-up Artist working on film, TV and theatre productions

Health and Social Care

Level	Course	Career ideas
4	HNC Health and Social Care	Nurse Midwife Occupational Therapist Physiotherapist Social Worker
5	FdSc Professional Practice in Health and Social Care	

HNC Health and Social Care

- > Designed to equip students with the knowledge, understanding and skills for success, this course offers a variety of topics relevant to the industry; ranging from key principles to health promotion and communication.
- You will be expected to undertake a mandatory work placement where you will learn to apply your theoretical knowledge in a practical setting.
- Units include: Communicating in Health and Social Care Organisations, Principles of Health and Social Care Practice, Health and Safety, Personal and Professional Development, Working in Partnership in Health and Social Care, Health Promotion, The Role of Public Health, Physiological Principles for Health and Social Care.

Course type: Full-time **Validated by:** Pearson



FdSc Professional Practice in Health and Social Care

- > This course provides continuing personal and professional development in health and social care. Students must attain a work placement prior to enrolment on the course and 400 hours of work experience is a mandatory requirement.
- Students must also be able to demonstrate the potential to be caring and compassionate, and have the ability to develop meaningful relationships with service users/carers.
- Modules include: Work-based Learning (Academic and Practice), Reflective and Personal Development Skills, Essential Sciences for Person Centred Care; Holistic Assessment, Delivery and Implementation of Health and Social Care Interventions, Foundations for Effective Collaborative Practice; Promoting Health, Well-being and Independence; Using and Evaluating Evidence to Inform Practice, Leadership and Management.

Course type: Full-time **Validated by:** Sheffield Hallam University

Legal



FD Legal Practice

- > The Foundation Degree (FD) in Legal Practice offers a highly practical focus to legal study allowing students to develop specialist skills whilst also gaining a broad, contextual understanding of the profession where employers are demanding highly skilled graduates who have specialist knowledge combined with highly transferable skills.

Students will study a range of practice areas as well as developing wider skills in drafting, legal writing, advocacy and negotiation skills. These are all skills demanded by the sector in addition to sound legal knowledge.

Students will get the chance to complete a year-long work placement at a law firm in their chosen legal practice area alongside studies in Year 2.

Modules include: Introduction to HE Studies, Introduction of the Legal System and Legal Practice, Professional Legal Skills, Civil Law and Practice, Property Law and Practice, Business Law and Practice, Family Law and Practice, Internship, Wills and Probate Practice, Legal Research Project.

Course type: Full-time **Validated by:** The Open University

Level	Course	Career ideas
5	FD Legal Practice	Chartered Legal Executive Solicitor Legal Executive Advocates Lawyer

Media, Journalism and Photography

Level	Course	Career ideas
5	FdA Media Production	Journalist Digital Editor TV Producer Sound Assistant Freelance Sports Photographer
	FdA Photography	
6	BA (Hons) Creative Practice (Top-up) Media Production	
	BA (Hons) Creative Practice (Top-up) Photography	

FdA Media Production

- > This course has a strong practical emphasis exploring a wide variety of media production forms, responding to the ever-changing nature of the industry.

Students benefit from small groups, tutor access, state-of-the-art facilities and technical support to develop skills in an environment resourced to industry standards. The course works closely with employers to create a programme that addresses the real needs of the current market.

Modules include: Introduction to Media Production, Post Production, Practical Production Skills, Sound Production Skills, Contextual Studies 1, Motion Graphics, Advancing Edit Skills, Factual Project, Fiction Project, Progression and Critical Theory, Major Project, Work-based Learning.

Course type: Full-time **Validated by:** Sheffield Hallam University

FdA Photography

- > Offering skills relevant for a rapidly changing industry, students are encouraged to develop their own style using a wide variety of equipment.

The department has had a large investment in state-of-the-art digital photographic technologies, making it one of the best equipped courses in the country with strong industry contacts.

Modules include: Introduction to Photographic Practice, People, Lighting and Studio, Still Life and Advertising, Critical and Contextual Studies, Post-production Techniques, Work-based Learning (Applied Photographic Project), Self-promotion Through Publishing, Advanced Creative Photographic Practice, Advanced Digital Workflow in Photographic Practice, Exhibition and Presentation Skills, Specialist Professional Development, Professional Study and Progression.

Course type: Full-time **Validated by:** Sheffield Hallam University



BA (Hons) Creative Practice (Top-up) Media Production

- > This course is aimed at students who wish to top-up their Level 5 qualification to a full Bachelor's (Honours) Degree.

Students will have the opportunity to undertake a practical, industry-based creative project which may involve factual or fictional based productions, as well as writing research proposals for specialist projects you plan to undertake. Students will work towards the completion of a personal major practical project, and professionally present work in an end of year exhibition and screening to industry invited guests.

Modules include: Critical Studies, Creative Practice, Professional Development, Planning for the Major Project, Major Project.

Course type: Full-time **Validated by:** Sheffield Hallam University

BA (Hons) Creative Practice (Top-up) Photography

- > This course is aimed at students who have studied photography at Foundation Degree (or equivalent) and wish to top-up to a full Bachelor's (Honours) Degree.

Throughout the course, students will be given the opportunity to refine personal style and develop professional skills. Students on the course will undertake a practical industry-based project which may involve work-based learning, exhibiting work, business start-ups, self-promotion or internships. Students will work towards the completion of a personal major practical project and professionally present work in an exhibition to industry invited guests.

Modules include: Critical Studies, Creative Practice, Professional Development, Planning for the Major Project, Major Project.

Course type: Full-time **Validated by:** Sheffield Hallam University

Music and Performing Arts

Level	Course	Career ideas
5	FD Music Performance and Production	Professional Musician Music Producer Music Teacher Sound Technician Actor/Actress Composer Playwright
	FdA Performing Arts (Drama)	
	FdA Performing Arts (Musical Theatre)	
6	BA (Hons) (Top-up) Music Performance and Production	
	BA (Hons) (Top-up) Performing Arts (Drama)	
	BA (Hons) (Top-up) Performing Arts (Musical Theatre)	

FD Music Performance and Production

- > This course focuses on the practical nature of music production and performance, contextualising it with industrial/professional and theoretical perspectives.
- It offers a practical focus allowing students to develop specialist skills and to study chosen areas in-depth. Focusing on employability, the course involves work-related learning plus simulated and live briefs. Students work across a range of venues engaging in large scale projects involving project management.
- Modules include: Practical Musicianship 1, Elements of Composition, Popular Music in Context, Composition in Context, Recording and Live Sound, Harmony and Composition, Advanced Practical Musicianship, Music Studio Production, Composition/Songwriting Portfolio, Session Styles and Improvisation, Music Process and Production.
- Course type:** Full-time **Validated by:** The Open University

FdA Performing Arts (Drama)

- > This vibrant and exciting course allows students to explore the different elements of performing arts with a focus on acting.
- Students will create performances for a variety of audiences and forge links with local professionals. The course will provide students with broad-based study and help to extend knowledge, expand abilities and experiences as an actor.
- Modules include: Professional Roles and Practice, Performing Arts in Context, Practitioner Skills, Performance Skills Workshop, Skills for the Workplace, Performing Arts in Practice, Research and Analysis in the Performing Arts, Advanced Practitioner Skills, Managing a Performance, Performance Project, Advanced Performance.
- Course type:** Full-time **Validated by:** Sheffield Hallam University

FdA Performing Arts (Musical Theatre)

- > Are you interested in learning more about this exciting and expanding area of performance?

The course aims to provide students with a broad-based area of study in the field of performing arts and helps students extend their knowledge, their abilities and experiences. The course will provide a foundation for a range of careers in performing arts and within community arts organisations.

Modules include: Professional Roles and Practice, Performing Arts in Context, Practitioner Skills, Performance Skills Workshop, Skills for the Workplace, Performing Arts in Practice, Research and Analysis in the Performing Arts, Advanced Practitioner Skills, Managing a Performance, Performance Project, Advanced Performance.

Course type: Full-time **Validated by:** Sheffield Hallam University

BA (Hons) (Top-up) Music Performance and Production

- > This exciting new course aims to provide students with a broad ranging study of the field of music, and the opportunity to develop detailed specialist knowledge in music performance and production.

Taught by experienced staff (all practising musicians with business expertise), this course offers extensive concentration on practical skills of musicianship, composition, recording and live sound in industry standard facilities, including a recording studio networked to fully kitted practice rooms and computer rooms with logic industry software. Strong employer links in the creative industries offer opportunities for extensive experience of performance.

Modules include: Major Project, Minor Project, Professional Practice.

Course type: Full-time **Validated by:** The Open University

BA (Hons) (Top-up) Performing Arts (Drama)

- > Providing students with a broad-based area of study, this course develops specialist knowledge and skills.

With strong employer links in the creative industries and opportunities for extensive experience of performance, students will benefit from some study alongside students on Music Performance and Production, and Musical Theatre courses. Offering specialist study but also allowing a broader context ensures students are able to cope with an era of convergence in media, music and performing arts in general. The course includes workshops and discussions with the Sheffield Theatres Group, other organisations and current practitioners working in the industry.

Modules include: Major Performance, Minor Project, Planning a Performance, Professional Practice.

Course type: Full-time **Validated by:** The Open University

BA (Hons) (Top-up) Performing Arts (Musical Theatre)

- > This course aims to provide students with a broad-based area of study with a focus on musical theatre.

It will help students to extend their knowledge, expand their abilities and experiences. Students will be given the opportunity to create performances for a variety of audiences and to forge links with local professionals in the arts community.

Modules include: Skills for the Workplace, Performing Arts in the Twentieth Century, Practitioner Skills 1 (Exploring Genre), Practitioner Skills 2 (Exploring Techniques), Performance, Professional Roles and Practice, Performing Arts in Practice, Research and Analysis in the Performing Arts, Managing a Performance, Advanced Practitioner Skills: Musical Theatre, Advanced Performance: Musical Theatre.

Course type: Full-time **Validated by:** The Open University

Science and Dental



FD Dental Technology

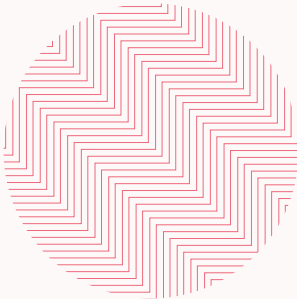
> Offering a highly practical focus to dental technology, this course allows students to develop in-depth specialist skills whilst also gaining a broad, contextual understanding of the profession in which employers are demanding highly skilled graduates.

The course encourages the development of practical skills in specialist areas, including complete/partial removable prosthodontics, fixed restorative prosthodontics and orthodontics that meet the needs of the profession. Students who graduate will be safe beginners and able to continue to develop skills in the industry.

Modules include: Introduction to Dental Technology Techniques, Anatomy and Terminology, Legislation and Professionalism, Materials Sciences, Dental Public Health, Medical Emergencies and Dental Team Work, Introduction to Advanced Techniques, Dental Material Science, Work-based Project.

Course type: Full-time **Validated by:** The Open University

Level	Course	Careers
5	FD Dental Technology	Dental Technologist Dental Implantologist



Sport



FdSc Sport and Exercise Coaching

> Interested in pursuing a career in the sport and exercise industry? This course aims to develop understanding of academic theory in alignment with significant practical experience and coaching opportunities.

The course also helps to develop study skills, knowledge, professional practice and specific industry skills gained through work-based learning and voluntary opportunities to improve employability and awareness of the industry.

Modules include: Personal and Academic Development, Work-based Learning, Sport and Exercise in the UK, Principles of Human Behaviour, Leadership and Innovation in Sport and Exercise, Applied Coaching, The Science of Sport (Physiology and Nutrition), Coaching Enterprise, Research Project, Application of Science, Coaching Process.

Course type: Full-time **Validated by:** Sheffield Hallam University

Level	Course	Careers
5	FdSc Sport and Exercise Coaching	Sports Development Officer Sports Coach Strength and Conditioning Coach

Uniformed Public Services

Level	Course	Careers
5	FdA Public Services: Policing Studies	Police Officer Military Police Private Security Justice Sector Worker

FdA Public Services: Policing Studies

- > This exciting course integrates work-related experience with the underpinning academic knowledge needed to achieve employability in the areas of policing and justice.
- Students are encouraged to establish links with the police, voluntary organisations or within the criminal justice system to complete work-based learning/industrial placement modules. The course aims to support the acquisition of knowledge and skills in criminology and criminal justice, with a particular focus on policing.
- Modules include: Police Procedure and Professional Ethics, Introducing Criminology, Criminal Justice System, Psychology and Crime, Policing and Criminal Justice, Organisational Context, Contemporary Police and Policing, Criminological Theory, Policy and Legal Frameworks, Work-based Learning, High Risk and Serious Offenders, Research Project in Criminology.
- Course type:** Full-time **Validated by:** Sheffield Hallam University



Higher and Degree Apprenticeships

If you are progressing from an Advanced Apprenticeship or a Level 3 study programme, you may wish to continue your study with your employer with a Higher or Degree Apprenticeship. Higher and Degree Apprenticeships work in the same way as other Apprenticeships, with most of your time spent training in your job role with your employer.

Upon completion of a Higher Apprenticeship you will gain a Level 4 or 5 qualification and be able to progress on to a Degree Apprenticeship, where you will gain the equivalent to a full Bachelor's (Honours) Degree.

Alternatively if you are employed, meet the Apprenticeship entry requirements and your employer would like you to do an Apprenticeship, we can speak to your employer about the prospects of setting it all up for you. Email employer@sheffcol.ac.uk for more information.

All Apprenticeships are dependent on your employment circumstances.

Higher Apprenticeships	
Level 4	Management Business and Professional Administrator Construction Management Engineering Manufacturing Electrical Engineering Software Developer
Level 5	Management Healthcare Assistant Practitioner Care Leadership and Management – Adult Social Care HR Consultant/Partner Operations/Departmental Manager
Degree Apprenticeship	
Level 6	Chartered Legal Executive

Professional Courses

At The Sheffield College we offer a wide range of qualifications that aim to boost your CV and give you the theoretical knowledge you need to progress in the workplace.

The tuition fees for these courses may be covered by 19+ Advanced Learner Loans. Please see our website for more details including start dates, fees and module information.

Qualification	Level
AAT Accounting – Advanced Diploma	3
AAT Accounting – Professional Diploma	4
OCR – Business Administration NVQ Diploma	3
OCR – Business Administration NVQ Diploma	4
CILEX – Certificate in Law and Practice	3
CILEX – Professional Diploma in Law and Practice	3
CILEX – Graduate FastTrack Diploma	6
CILEX – Professional Higher Diploma in Law and Practice	6

If you don't have an employer but would like to find out more about Higher or Degree Apprenticeships, and any potential vacancies, please get in touch with jobconnect@sheffcol.ac.uk or ring **0114 260 2600**



Qualification	Level
CIPD Foundation Certificate in Human Resource Practice	3
CIPD Foundation Diploma in Human Resource Practice	3
CIPD Intermediate Certificate in Human Resource Management	5
ILM Online – Leadership and Management – Award/Certificate/Diploma	3
ILM Online – Leadership and Management – Award/Certificate/Diploma	4
ILM Online – Leadership and Management – Award/Certificate/Diploma	5
ILM – Management NVQ Diploma	3
ILM – Management NVQ Diploma	4
ILM – Management and Leadership NVQ Diploma	5
ILM – Strategic Leadership and Management NVQ Diploma	7
Internal Quality Assurance – SEFYAC	4
Certificate in Personal Training	3
Personal Training and Fitness Instructing	3
Sports Massage	3
Teaching English to Speakers of Other Languages	3
Team Leader/Supervisor (Apprenticeship)	3

Summary of Main Contractual Terms and Conditions

When you accept a place at The Sheffield College you agree to be bound by the Terms and Conditions of the contract. This is a summary of the main clauses. The full text is available at www.sheffcol.ac.uk/about-us/terms-and-conditions

1. Pre-enrolment contract

This is formed when you accept the offer of a place and it secures that place for you, provided you meet any conditions stated in your offer letter. You have the right to cancel this contract within 14 days of accepting the offer.

2. The enrolment contract

a. *The enrolment contract is formed at enrolment. From this time you become liable for the following financial arrangements:*

- Payment of tuition fees - your tuition fees will not change during the course
- If you withdraw after the end of Semester 1 you will be liable for payment of the whole of the annual fee
- If you withdraw from the course before the end of Semester 1 you will be liable for payment of 50% of the annual fee
- Student Finance England will not pay your fees following withdrawal from the course

b. *Changes to your course*

The college will make every effort to provide the course as described on the website information. If, due to circumstances outside our control, changes have to be made to the course you will be informed in writing as soon as practicable.

c. *Course closure*

In rare circumstances, the college may decide to close a course up to 28 days before it is due to start. This may happen, for example, if there are insufficient applicants to provide you with a quality learning experience. In such circumstances the college will offer you an alternative place if appropriate or inform you of other institutions that may be able to meet your needs.

d. *Compliance with the regulations*

On enrolment you become subject to the regulations. These include:

- Academic and assessment
- Conduct, fitness to practice
- Expulsion and discipline
- Fees and financial
- Information technology
- Intellectual property
- Complaints and appeals

The Sheffield College

+44 114 260 2600

info@sheffcol.ac.uk

www.sheffcol.ac.uk

All information is correct at time of print.

Data and statistics taken from EMSI software.

If you need this guide in any other format, please get in touch.

