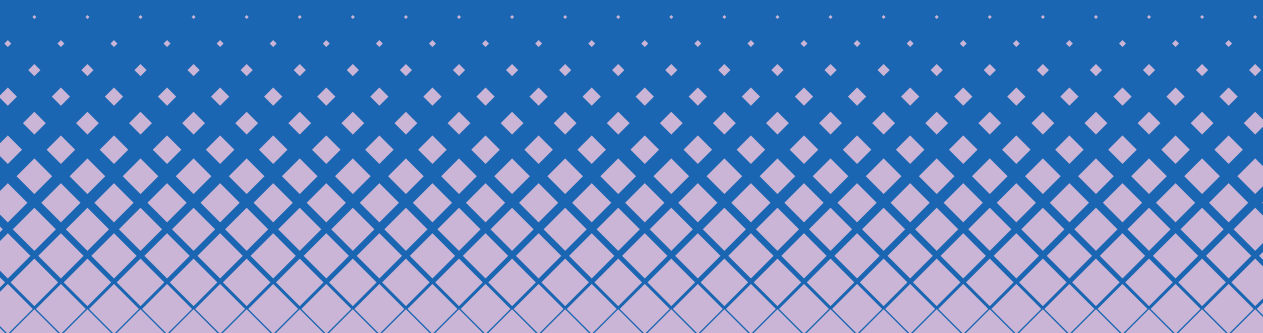


**The  
Sheffield  
College**

**2021-2022**

A Guide to University Level  
and Professional Courses

**GO  
HIGHER**



# WELCOME

**Do you aspire to going further in your education and achieving a university level qualification to boost your career prospects?**

The Sheffield College offers a great range of university level qualifications including full honours degrees, foundation degrees and higher national diplomas and certificates.

Studying at this level will enable you to develop the industry relevant knowledge and skills that you will need to break into a new career or to progress in an existing one.

We offer an exciting range of subject choices. What's more, you will also benefit from lower tuition fees, smaller class sizes and expert support.

Our university level qualifications are designed to meet the needs of employers and can be completed full-time or part-time to fit in with family and work commitments.

Around 420 students complete full-time and part-time university level courses with us every year, which are recognised by universities, employers and professional bodies.

We provide a friendly and supportive atmosphere with some great facilities including two children's nurseries, and look forward to welcoming you.



**Angela Foulkes**  
Chief Executive and Principal,  
The Sheffield College

## WHY STUDY WITH US

Did you know that you don't have to go to university to study for a university level qualification?

At The Sheffield College, you can join an increasing number of students who are choosing to study university level qualifications in a wide range of career driven courses with us. All of our courses are validated by leading universities, including Sheffield Hallam University and The Open University.

Here are just a few reasons why you should study with us:



Tutors who are industry experts

Fantastic support networks including in-class, personal and financial

Career driven courses

Small group sizes and progression support

Top-class facilities

The university experience

Lower tuition fees, less debt

Stay local

Graduation

Join one of our Open Days to have a look for yourself or contact [admissions@sheffcol.ac.uk](mailto:admissions@sheffcol.ac.uk) to find out more.

# THE UNIVERSITY EXPERIENCE

**Whilst your qualification will be your main focus, we know that having access to a university lifestyle is just as important. You want more, expect more and we're here to give you more. It's all about opportunities.**



## Accommodation

Looking to live with other students? As The Sheffield College is an associate college of Sheffield Hallam University, you will be eligible to apply to move in to their student accommodation and live the student lifestyle.

There is also a range of private student accommodation across Sheffield which you will be able to access.

Go to [www.sheffcol.ac.uk/student-support/he-accommodation](http://www.sheffcol.ac.uk/student-support/he-accommodation) for more information on how to apply for halls.

## Students' Union and Student Voice

Have your say on all pressing matters across the college by joining our Students' Union and Student Voice. Our Student Voice is comprised of reps from each course; all of whom are invited to training, monthly campus meetings, termly university level student forums and programme committees.

Our students are key contributors who drive programme changes and college improvements.

---

## Graduation

Each year, we go all out to celebrate the graduation of our university level students with a ceremony at Sheffield Cathedral.

Our graduations are an amazing occasion with special guests, alumni speakers, and cap and gowns which represent the colour of the institution that validates your degree. They're a fantastic opportunity to celebrate your hard work and achievements with your loved ones.



---

## Your own space

At our City and Hillsborough Campuses, we have invested in common room spaces for our university level students. The common room includes a small kitchenette, spaces for group work and table football, and gives you the chance to have your own space!

The idea of a common room was first raised at a Student Voice meeting which just goes to show that we are making improvements to your experience based on your recommendations.

---

## Join a club or society

We have a number of clubs and societies across the college, including our ever-growing LGBT+ Society, Film Club, Debate and Politics, and a Games Club. We will also help you set up your own if it doesn't exist yet!



Fitness facilities

Keep yourself fit and healthy with free access to our gym facilities, or hire out our sports halls and all-weather 3G pitches.

BUCS

In 2019, for the first time, our students entered the British Universities and Colleges Sport competitions. If you perform at a high level, our membership allows you to compete against university students from across the country.

Trips and visits

Everyone loves a good trip, don't they? We put on visits to workplaces, locations around the country and even further afield to broaden your knowledge of different cultures and influences to enhance your learning.

In the last couple of years we've organised trips to New York, Florence, Berlin, Amsterdam, Beijing, London and lovely old Whitby.

Please note: some trips may incur extra costs.



Discounts

Being a university level student at The Sheffield College entitles you to exactly the same discounts and benefits that all university students receive, including:

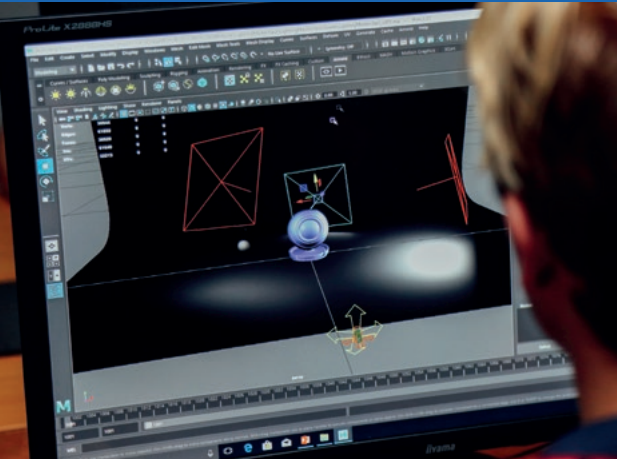
- council tax discounts
- free prescriptions
- student bank accounts and 0% interest overdrafts
- shopping discounts, including ASOS, Amazon, Spotify and more
- Access to NUS Totem Card
- free Microsoft Office packages

**“BECAUSE OF THE SHEFFIELD COLLEGE I HAVE LEARNT HOW TO WRITE, RECORD, PRODUCE AND MARKET MY OWN MUSIC.”**

**Carlene Roper**, BA Top-up Music Performance and Production

**“THE COURSE SETS ME UP PERFECTLY FOR EMPLOYMENT WITH CHANCES OF INTERNSHIPS ALONGSIDE MY STUDIES. SOME PROJECTS ARE ALSO SET BY DESIGN COMPANIES ALLOWING ME TO WORK ON LIVE BRIEFS.”**

**Jacob Jeffcock**, Foundation Degree in Graphic Design student



# COURSES

Animal Care	16–17
Business and Professional Services	18–21
Catering and Hospitality	22–23
Civil Engineering	24–25
Computing	26–27
Construction	28–29
Dental	30–31
Design and Visual Arts	32–35
Education	36–37
Engineering	38–41
Floristry	42–43
Health and Social Care	44–45
Media Make-up	46–47
Media, Journalism and Photography	50–53
Music and Performing Arts	54–59
Sport	60–61
Uniformed Public Services	62–63
Higher and Degree Apprenticeships	64–65
Professional Courses	66–67

# ANIMAL CARE

## HND Animal Management

This course provides opportunities for students to concentrate on the development of higher-level skills in a land-based context and learn how their role, and that of their business, fits within the overall structure of the land-based industries, the national and international economy, and the global overview.

This qualification equips individuals with the knowledge, understanding and skills for successful employment or progression to further study. The course also provides opportunities for specialist study relevant to individual vocations and contexts.

**Modules include:** Business Environment, Animal Husbandry, Animal Health and Welfare, and Animal Nutrition. There are also a number of specialist modules available.

Course type:  
Full-time

Validated by:  
Pearson

Campus:  
Hillsborough

UCAS code:  
DN32

Level	Course
5	HND Animal Management

Career routes	Potential salary
Pet Behaviour Counsellor	£50,000
RSPCA Inspector	£30,000
Veterinary Nurse	£26,000
Zookeeper	£25,000



## BUSINESS AND PROFESSIONAL SERVICES



### FdA Business Leadership and Management

Providing the knowledge and understanding of how businesses are set up, operate and are managed, this course will develop confident leaders with effective interpersonal, communication and problem-solving skills.

Successful completion of the course will provide students with the knowledge to pursue careers in business, set up a business or continue to top-up to a full Honours Degree.

**Modules include:** Economics for Business, Personal and Professional Development, Managing People, Financial Decision Making, Marketing a Product, Business Law, Business Strategy, Leading and Managing Change, Managing eBusiness, Leading and Managing a Project, Global Perspectives, Ethics and Research.

#### \*Subject to change

**Course type:**  
Full-time

**Validated by:**  
Sheffield Hallam University

**Campus:**  
Hillsborough

**UCAS code:**  
N200

### BA (Top-up) Management (Business)

This exciting one year top-up course aims to develop specialist knowledge and a broad understanding of the global, national, regional and local business environment. Graduates will develop skills to enable them to work within the global management environment.

Students will study modules with students on the Top-up Management (Events) and Top-up Management (Sport) courses, as well as following a specialist business management pathway.

**Modules include:** Organisational Psychology, Strategic International Management, International Marketing, Minor Research Project, Major Project.

**Course type:**  
Full-time

**Validated by:**  
The Open University

**Campus:**  
Hillsborough

**UCAS code:**  
N1R3

### BA (Top-up) Management (Events)

This exciting, one year top-up course aims to develop specialist knowledge and a broad understanding of the global, national, regional and local events business environment. Graduates will develop skills to enable them to work within the global management environment.

Students will study modules with students on the Top-up Management (Business) and Top-up Management (Sport) courses, as well as following a specialist events management pathway.

**Modules include:** Creativity and Enterprise in Events, Strategic International Management, International Marketing, Minor Research Project, Major Project.

**Course type:**  
Full-time

**Validated by:**  
The Open University

**Campus:**  
Hillsborough

**UCAS code:**  
N821

**BA (Top-up) Management (Sport)**

This exciting one year top-up course aims to develop specialist knowledge and a broad understanding of the global, national, regional and local sport business environment. Graduates will develop skills to enable them to work within the global management environment. Students will study modules with students on the Top-up Management (Events) and Top-up Management (Business) courses, as well as following a specialist sports management pathway.

**Modules include:** Innovation for Sport, Strategic International Management, International Marketing, Minor Research Project, Major Project.

Course type:  
Full-time

Validated by:  
The Open University

Campus:  
Hillsborough

UCAS code:  
N880



Level	Course	Career routes	Potential salary
6	BA (Top-up) Management (Sports)	Event Manager	£80,000
	BA (Top-up) Management (Business)	Business Project Manager	£70,000
	BA (Top-up) Management (Events)	Business Development Manager	£60,000
5	FdA Business Leadership and Management	Charity Fundraiser	£60,000
		Marketing Executive	£35,000

# CATERING AND HOSPITALITY

## FdSc Bakery and Patisserie Technology

Developed in consultation with industry, this course develops the practical skills, technical ability and business knowledge needed for success in a creative, rewarding and challenging industry.

Whether you want to start your own business baking artisan breads, become a chocolatier or patissiere, or work in food technology or new product development, you will develop the high-level technical and operational skills required to succeed.

**Modules include:** Artisan Bread, Bakery and Confectionery Science, Food Safety and Hygiene, Specialist Confectionery, Introduction to Patisserie, Managing for a Profit, Advanced Confectionery and Chocolate, Contemporary Bread Production, Food Production Management, Quality Management Systems, Contemporary Patisserie, Enterprise Start-up Studies and New Product Development.

Course type:  
Full-time

Validated by:  
University College  
Birmingham

Campus:  
City

UCAS code:  
D6M7

Level	Course
5	FdSc Bakery and Patisserie Technology

Career routes	Potential salary
Food Scientist	£45,000
Baker	£40,000
Cake Decorator	£25,000



# CIVIL ENGINEERING

## HNC Construction and the Built Environment (Civil Engineering)

This two-year, broad-based course develops knowledge and understanding of a wide range of subjects, learning and study skills appropriate to higher education.

Communication, study and analytical skills will be developed through a wide range of assignment tasks, practical sessions and project work. The course is recognised by several professional bodies, including The Chartered Institute of Highways and Transportation, and the Institute of Civil Engineers.

**Modules include:** Individual Project, Construction Technology, Science and Materials, Construction Practice and Management, Construction Information (Drawing, Detailing, Specification); Maths for Construction; Principles of Structural Design.

Course type:  
Part-time

Validated by:  
Pearson

Campus:  
City

Level	Course
4	HNC Construction and the Built Environment (Civil Engineering)

Career routes	Potential salary
Civil Engineering	£80,000
Land Surveyor	£70,000
Structural Engineer	£50,000



# COMPUTING

## HNC Computing

This HNC course has been developed in conjunction with employers in the Sheffield City Region and addresses the key skills required for a successful career in the computing industries.

The course covers a range of advanced level skills in high demand, both locally and internationally. Students are offered a broad introduction to the subject area via a mandatory core of learning, while allowing for the acquisition of skills and experience through the selection of units across a range of occupational sectors.

The course will use up-to-date teaching resources from our status as a Cisco Academy, such as Packet Tracer, and will be based in a brand-new networking lab using high-end client and server equipment. Engagement with local employers through trips and visits will also be incorporated into the course.

This course is equivalent to the first year of a degree and, upon successful completion, students can progress and top-up their qualification to a HND in Computing in the second year of the course.

**Modules include:** Programming, Networking, Professional Practice, Database Design and Development, Security, Managing a Successful Computing Project, Computer Systems Architecture and Maths for Computing.

Course type:  
Full-time

Validated by:  
Pearson

Campus:  
City

UCAS code:  
4R2Q

## HND Computing

This HND course has been developed in conjunction with employers in the Sheffield City Region and addresses the key skills required for a successful career in the computing industries. The course is equivalent to the second year of a degree and top-up options are available for the full BSc (Hons) qualification.

The course covers a range of advanced level skills in high demand, both locally and internationally, and is designed to bridge the digital skills gaps with an industry-specialist taught advanced programme.

Learners will not only develop key skills across a range of subjects, but will develop independence and interdependence via combinations of individual and group projects.

The Sheffield College works in close partnership with several major local companies, through which guest speakers and study trips will be arranged throughout the year. There may also be an opportunity to compete in the WorldSkills competition with regional and national heats in a computing-related field, leading to representing the UK at the world finals.

**Modules include:** Computing Research Project, Business Intelligence, Network Security, Forensics, Artificial Intelligence, Games Development, Virtual and Augmented Reality Development.

Course type:  
Full-time

Validated by:  
Pearson

Campus:  
City

UCAS code:  
5R2Q

Level	Course
5	HND Computing
4	HNC Computing

Career routes	Potential salary
Computing Software Developer	£70,000
IT Project Manager	£70,000
Forensic Computer Analyst	£60,000
App Developer	£55,000

# CONSTRUCTION

## HNC Construction and the Built Environment

This two-year, part-time course will develop knowledge and understanding of a wide range of construction subjects.

Communication, study and analytical skills appropriate to higher education will be developed through learning and study skills. The qualification is recognised by several professional bodies, including The Chartered Institute of Building and The Royal Institute of Chartered Surveyors.

**Modules include:** Individual Project, Construction Technology, Science and Materials, Construction Practice and Management, Legal and Statutory Responsibilities in Construction, Construction Information (Drawing, Detailing, Specification); Surveying, Measuring and Setting Out.

Course type:  
Part-time

Validated by:  
Pearson

Campus:  
City



Level	Course
4	HNC Construction and the Built Environment

Career routes	Potential salary
Construction Contracts Manager	£57,000
Construction Site Manager	£50,000
Building Surveyor	£30,000
Facilities Manager	£26,000
Environmental Consultant	£25,000

Please refer to the website for full course details, entry requirements and the most up-to-date information [www.sheffcol.ac.uk/courses](http://www.sheffcol.ac.uk/courses)

# DENTAL

## FD Dental Technology

In an industry where employers require highly skilled graduates, this course provides a highly practical focus to dental technology which allows students to develop in-depth specialist skills whilst also gaining a broad, contextual understanding of the profession.

The course encourages the development of practical skills in specialist areas, including complete/partial removable prosthodontics, fixed restorative prosthodontics and orthodontics that meet the needs of the profession. Students who graduate will be safe beginners and able to continue to develop skills in the industry.

**Modules include:** Introduction to Dental Technology Techniques, Anatomy and Terminology, Legislation and Professionalism, Dental Public Health, Removable Prosthesis and Orthodontics, Introduction to Advanced Techniques, Dental Material Science, Work-based Project.

Course type:  
Full-time

Validated by:  
The Open University

Campus:  
City

UCAS code:  
B840

Level	Course
5	FD Dental Technology

Career routes	Potential salary
Dental Technician	£43,772



Please refer to the website for full course details, entry requirements and the most up-to-date information [www.sheffcol.ac.uk/courses](http://www.sheffcol.ac.uk/courses)

## DESIGN AND VISUAL ARTS



### FdA Creative Digital Practice; Games Development

This innovative course draws upon approaches which underpin professional practice and contemporary thinking.

Experienced staff and high-quality industry support ensure the course prepares students for employment, postgraduate study and/or self-fulfilment. As well as designing/developing a proposal document for a working production, a self-initiated project builds on existing skills and knowledge to carry out specialist research for a negotiated brief.

**Modules include:** Games Studies, Ideation and Creative Problem Solving, 3D Games Engines, Games Design, Practical and Technical Skills for Industry, 3D Modelling and Texture Creation, Group Project: 3D Games World Production, 3D Animation, Professional Practice, Self-initiated Project in Games Development.

**Course type:**  
Full-time

**Validated by:**  
Sheffield Hallam  
University

**Campus:**  
Hillsborough

**UCAS code:**  
1167

### FdA Graphic Design

This course has a strong vocational and industrial focus. Students graduate with high levels of creative and professional skills, and knowledge and expertise derived from a curriculum that places emphasis on work-based learning experiences/practice.

Students will be equipped with the knowledge, understanding and skills required for success in the sector, or the opportunity for progression to further study including to our BA (Hons) Creative Practice (Top-up) Graphic Design course.

**Modules include:** Introduction to Design, Visual Communications, Corporate Identity, Advertising and Promotion, Contextual Studies, Design in the Digital Environment, Graphics and Branding, Professional Design Project, Competition Projects, Preparation for Industry, Work-based Learning.

**Course type:**  
Full-time

**Validated by:**  
Sheffield Hallam  
University

**Campus:**  
Hillsborough

**UCAS code:**  
W210



Please refer to the website for full course details, entry requirements and the most up-to-date information [www.sheffcol.ac.uk/courses](http://www.sheffcol.ac.uk/courses)

**BA (Hons) Creative Practice (Top-up)**  
**Graphic Design**

This course is aimed at students who wish to top-up their Foundation Degree to a full Bachelor's (Honours) Degree.

Students will have the opportunity to undertake a practical, industry-based creative project which may involve work-based learning, exhibiting work, business start-ups, self-promotion or internships, as well as writing research proposals for specialist projects you plan to undertake. Students will work towards the completion of a personal major practical project and professionally present work at an end of year exhibition to industry-invited guests.

**Modules include:** Critical Studies, Creative Practice, Professional Development, Planning for the Major Project, Major Project.

**Course type:**  
Full-time

**Validated by:**  
Sheffield Hallam University

**Campus:**  
Hillsborough

**UCAS code:**  
W2A3



Level	Course
6	BA (Hons) Creative Practice (Top-up) Graphic Design
5	FdA Creative Digital Practice; Games Development
	FdA Graphic Design

Career routes	Potential salary
Computer Games Developer	£70,000
Senior Graphic Designer	£50,000
Illustrator	£40,000
Web Designer	£40,000
Animator	£36,000

# EDUCATION

## FD Education & Learning Support

This Foundation Degree is designed to prepare you with the knowledge and skills to support children and young people in achieving their full learning potential.

You will develop your knowledge of theory, research and policy in education, and apply your learning to your own professional practice.

If you work alongside teachers in a support role, in an educational setting for children or young people, or in an early years setting which delivers the Early Years Foundation Stage statutory framework, this course will develop your skills and enhance your career prospects.

This course can be used to gain leadership and management roles across a range of early years settings, and can lead to further study at Level 6, including degrees which confer Qualified Teacher Status. (QTS).

**Modules include:** Children’s Development, Developing Local Community Partnership, Professional Roles In Educational Settings, Teaching and Learning, The Contemporary Curriculum, Safeguarding Children and Young People, Social Inclusion In Educational Contexts and The Reflective Practitioner.

Course type:  
Full-time

Validated by:  
Sheffield Hallam  
University

Campus:  
City

UCAS code:  
U3A4



Level	Course
5	FD Education & Learning Support

Career routes	Potential salary
Primary School Teacher	£61,005
Secondary School Teacher	£61,005
University Lecturer	£55,000
English as a Foreign Language Teacher	£35,005
Early Years Teacher	£30,000

Please refer to the website for full course details, entry requirements and the most up-to-date information [www.sheffcol.ac.uk/courses](http://www.sheffcol.ac.uk/courses)

# ENGINEERING



## HNC in Engineering: Electrical and Electronic Engineering

Pearson Edexcel Higher Nationals are designed to provide a specialist vocational programme linked to professional body requirements and National Occupational Standards where appropriate.

The development of this two-year course was informed by discussions/relevant publications from the Engineering Council UK (EC [UK]) and the Science, Engineering and Manufacturing Technologies Alliance (SEMTA). It offers a strong, sector-related emphasis on practical skills development alongside the development of requisite knowledge and understanding.

**Modules include:** Engineering Design, Engineering Maths, Engineering Science, Managing a Professional Engineering Project, Electrical and Electronic Principles, plus three optional units.

**Course type:**  
Part-time

**Validated by:**  
Pearson

**Campus:**  
Olive Grove



## HNC in Engineering: Manufacturing Engineering

This two-year, part-time course is aimed at students who have already gained a Level 3 qualification in Manufacturing Engineering, A Levels in Maths and Science, or the required experience in the manufacturing engineering field. HNCs consist of mandatory core units and specialist units. The specialist units are designed to provide a specific focus to the qualification. These specialist, vocational qualifications teach students the key concepts and practical skills for direct progression to, or within, employment.

**Modules include:** Engineering Design, Engineering Maths, Engineering Science, Managing a Professional Engineering Project, Production Engineering for Manufacture, Quality and Process Improvement, plus two optional units.

**Course type:**  
Part-time

**Validated by:**  
Pearson

**Campus:**  
Olive Grove

Please refer to the website for full course details, entry requirements and the most up-to-date information [www.sheffcol.ac.uk/courses](http://www.sheffcol.ac.uk/courses)

**HND in Engineering:**  
**Electrical and Electronic Engineering**

Pearson Edexcel Higher Nationals are designed to provide a specialist vocational programme linked to professional body requirements and National Occupational Standards where appropriate.

This HND is a one year course which students successfully completing the HNC Electrical and Electronic Engineering can top-up to. It aims to develop skills and techniques, personal qualities and attributes to equip individuals with the knowledge and understanding for successful employment in electrical and electronic engineering. Electrical and Electronic Principles is the core unit.

**Modules include:** Research Project, Professional Engineering Management, Further Mathematics, Industrial Power, Electronics and Storage, Industrial Systems, plus two optional.

Course type:  
Part-time

Validated by:  
Pearson

Campus:  
Olive Grove



**HND in Engineering:**  
**Manufacturing Engineering**

This part-time HND allows students who have already gained a HNC to top-up their qualification in just one year.

These specialist, vocational qualifications teach learners the key concepts and practical skills for direct progression to, or within, employment. The course is made up of core and specialist units which are designed to provide a specific focus to the qualification.

**Modules include:** Research Project, Professional Engineering Management, Manufacturing Systems Engineering, Lean Engineering, Advanced Manufacturing Technology, plus two optional. Please note that some modules may be subject to change. Should this be necessary, information will be made available immediately.

Course type:  
Part-time

Validated by:  
Pearson

Campus:  
Olive Grove

Level	Course
5	HND in Engineering – Manufacturing Engineering
	HND in Engineering – Electrical and Electronic Engineering
4	HNC in Engineering – Manufacturing Engineering
	HNC in Engineering – Electrical and Electronic Engineering

Career routes	Potential salary
Renewable Energy Engineer	£80,000
Electrical Engineer	£60,000
Engineering Design and Development	£60,000
Aerospace Engineer	£60,000

Please refer to the website for full course details, entry requirements and the most up-to-date information [www.sheffcol.ac.uk/courses](http://www.sheffcol.ac.uk/courses)

# FLORISTRY

## Higher Diploma in Floristry (ICSF)

This Level 4 Floristry Diploma is aimed at experienced florists who aspire to, or who are already working at, management level within the floristry industry.

The course combines creative floristry techniques with business concepts and processes. Students will work on and develop their creative processes throughout the qualification, culminating in a design portfolio of around 35 technical designs. In addition, students will have opportunities to compete in national competitions and visit large-scale floristry events.

This qualification is assessed over an 18-month period by an on-going portfolio of practical and theoretical assignments, culminating in both a theory and practical examination.

**Modules include:** Botanical Concepts and Practices for Floristry, Historical Studies for Floristry, Floral Event Practices, Business Practices for Floristry, Marketing and Promotional Practices for Floristry, Technical Floristry Skills [Tied Designs], Technical Floristry Skills [Wired & Glued Designs], Technical Floristry Skills [Designs in Mediums], Technical Floristry Skills [Design Trends] and Design Concepts in Floristry.

Course type:  
Part-time

Validated by:  
City and Guilds

Campus:  
Hillsborough



Level	Course
4	Higher Diploma in Floristry (ICSF)

Career routes	Potential salary
Florist	£20,000

# HEALTH AND SOCIAL CARE



Level	Course
5	FdSc Professional Practice in Health and Social Care

Career routes	Potential salary
Sport Physiotherapist	£45,000
Midwife	£45,000
Occupational Therapist	£45,000
Nurse	£40,000
Social Worker	£40,000

## FdSc Professional Practice in Health and Social Care

The health and social care sector is rapidly expanding and the need for highly-skilled graduates has never been more important. The sector requires caring and compassionate workers to play a pivotal role in the industry, developing meaningful relationships with service users and providing a high-quality service in a wide range of health-related roles.

You will combine your education with either existing employment or work placements to develop your skills and competencies for a wide range of roles across the rewarding health, social or community care sectors.

Progression from this course allows you to specialise in a specific health and care field by completing a full Bachelor's Degree.

**Modules include:** Work-based Learning (Academic and Practice), Reflective and Personal Development Skills, Essential Sciences for Person Centred Care; Holistic Assessment, Delivery and Implementation of Health and Social Care Interventions, Foundations for Effective Collaborative Practice; Promoting Health, Well-being and Independence; Using and Evaluating Evidence to Inform Practice, Leadership and Management.

Course type:  
Full-time

Validated by:  
Sheffield Hallam  
University

Campus:  
Hillsborough

UCAS code:  
L5L5



Please refer to the website for full course details, entry requirements and the most up-to-date information [www.sheffcol.ac.uk/courses](http://www.sheffcol.ac.uk/courses)

# MEDIA MAKE-UP

## BA (Hons) Media Make-up and Hair Artistry

This highly creative course encourages students to enhance their creativity whilst building on theory to inform technical and design skills.

The course’s main focus is to develop a well-rounded graduate that can access a variety of roles within the media make-up and hair industry. Due to this, we encourage and work hard to find students work placements in theatre, TV & film. Industry guest speakers from fashion, theatre and television (Kryolan) will enhance the learning experience and expand knowledge of the industry.

Assessment is through a variety of methods, including practical applications, formal presentations, group work and essay writing.

**Modules include:** Intro to Academic and Professional Development, Creative Make-up, Creative Hairstyling, Fashion, Haute Couture and Photographic Make-up, Period Make-up, Historical Hair Design, Freelance and Career Progression, Professional Practice, Media Make-up in Context, Specialist Skills in Hair and Make-up, Showcase Event, Critical and Contextual Studies, Minor and Major Projects.

**\*Subject to change**

Course type:  
Full-time

Validated by:  
The Open University

Campus:  
Hillsborough

UCAS code:  
W4D6



Level	Course
6	BA (Hons) Media Make-up and Hair Artistry

Career routes	Potential salary
Make-up Designer	Variable dependent on hourly rates
Freelance Make-up Artist	
Make-up Artist working on film, TV and theatre productions	

Please refer to the website for full course details, entry requirements and the most up-to-date information [www.sheffcol.ac.uk/courses](http://www.sheffcol.ac.uk/courses)

**“AFTER A LONG BREAK FROM EDUCATION, I FOUND THE TUTORS INCREDIBLY ENGAGING, FUN, KNOWLEDGEABLE AND ALWAYS HAPPY TO REWARD ENTHUSIASM.”**

**Thomas Hird**, Foundation Degree in Film and Media Production

**“ALL OF MY TUTORS WERE HIGHLY KNOWLEDGEABLE IN THEIR SUBJECT AREAS AND ENSURED THAT I HAD A BROAD KNOWLEDGE OF THE UNITS OUTSIDE OF THE SPECIFIED COURSE CRITERIA, BETTER PREPARING ME FOR FURTHER STUDIES AND MY CAREER.”**

**Scarlett Smithies**, HND Animal Management student

# MEDIA, JOURNALISM AND PHOTOGRAPHY

## FdA Media Production

This course has a strong practical emphasis exploring a wide variety of media production forms, responding to the ever-changing nature of the industry.

Students benefit from small groups, state-of-the-art facilities and technical support to develop skills in an environment resourced to industry standards. The course works closely with employers to create a programme that addresses the real needs of the current market.

**Modules include:** Introduction to Media Production, Post-Production, Practical Production Skills, Sound Production Skills, Contextual Studies, Motion Graphics, Advancing Edit Skills, Factual Project, Fiction Project, Progression and Critical Theory, Major Project, Work-based Learning.

**Course type:**  
Full-time

**Validated by:**  
Sheffield Hallam  
University

**Campus:**  
Hillsborough

**UCAS code:**  
P310



## FdA Photography

Offering skills relevant for a rapidly changing industry, students are encouraged to develop their own style using a wide variety of equipment.

The department has had a large investment in state-of-the-art digital photographic technologies, making it one of the best equipped courses in the country with strong industry contacts.

**Modules include:** Introduction to Photographic Practice, People, Lighting and Studio; Still Life and Advertising, Critical and Contextual Studies, Post-production Techniques, Work-based Learning (Applied Photographic Project), Self-promotion Through Publishing, Advanced Creative Photographic Practice, Advanced Digital Workflow in Photographic Practice, Exhibition and Presentation Skills, Specialist Professional Development, Professional Study and Progression.

**Course type:**  
Full-time

**Validated by:**  
Sheffield Hallam  
University

**Campus:**  
Hillsborough

**UCAS code:**  
W640

Please refer to the website for full course details, entry requirements and the most up-to-date information [www.sheffcol.ac.uk/courses](http://www.sheffcol.ac.uk/courses)

**BA (Hons) Creative Practice (Top-up)**  
**Media Production**

This course is aimed at students who wish to top-up their Level 5 qualification to a full Bachelor’s (Honours) Degree.

Students will have the opportunity to undertake a practical industry-based creative project which may involve factual or fictional based productions, as well as writing research proposals for specialist projects you plan to undertake. Students will work towards the completion of a personal major practical project, and professionally present work at an end of year exhibition and screening to industry-invited guests.

**Modules include:** Critical Studies, Creative Practice, Professional Development, Planning for the Major Project, Major Project.

**Course type:**  
Full-time

**Validated by:**  
Sheffield Hallam University

**Campus:**  
Hillsborough

**UCAS code:**  
P3A4

**BA (Hons) Creative Practice (Top-up)**  
**Photography**

This course is aimed at students who have studied photography at Foundation Degree (or equivalent) and wish to top-up to a full Bachelor’s (Honours) Degree.

Throughout the course, students will be given the opportunity to refine personal style and develop professional skills. Students on the course will undertake a practical industry-based project which may involve work-based learning, exhibiting work, business start-ups, self-promotion or internships. Students will work towards the completion of a personal major practical project and professionally present work in an exhibition to industry-invited guests.

**Modules include:** Critical Studies, Creative Practice, Professional Development, Planning for the Major Project, Major Project.

**Course type:**  
Full-time

**Validated by:**  
Sheffield Hallam University

**Campus:**  
Hillsborough

**UCAS code:**  
W6A5



Level	Course
6	BA (Hons) Creative Practice (Top-up) Media Production
	BA (Hons) Creative Practice (Top-up) Photography
5	FdA Media Production
	FdA Photography

Career routes	Potential salary
Broadcast Journalist	£80,000
Newspaper Journalist	£50,000
Photographer	£50,000
Video Editor	£45,000
Sound Technician (TV or film)	£35,000

Please refer to the website for full course details, entry requirements and the most up-to-date information [www.sheffcol.ac.uk/courses](http://www.sheffcol.ac.uk/courses)

# MUSIC AND PERFORMING ARTS

## FD Music Performance and Production

This course focuses on the practical nature of music production and performance, contextualising it with industrial/professional and theoretical perspectives.

It offers a practical focus allowing students to develop specialist skills and to study chosen areas in-depth. Focusing on employability, the course involves work-related learning plus simulated and live briefs. Students work across a range of venues engaging in large scale projects involving project management.

**Modules include:** Practical Musicianship, Elements of Composition, Popular Music in Context, Composition in Context, Recording and Live Sound, Harmony and Composition, Advanced Practical Musicianship, Music Studio Production, Composition/Song-writing Portfolio, Session Styles and Improvisation, Music Process and Production.

**Course type:**  
Full-time

**Validated by:**  
The Open University

**Campus:**  
Hillsborough

**UCAS code:**  
W3W3



## FdA Performing Arts (Acting)

This vibrant and exciting course allows students to explore the different elements of performing arts with a focus on acting.

Students will create performances for a variety of audiences and forge links with local professionals. The course will provide students with broad-based study and help to extend knowledge, expand abilities and experiences as an actor.

**Modules include:** Professional Roles and Practice, Performing Arts in Context, Practitioner Skills, Skills for the Workplace, Performing Arts in Practice, Research and Analysis in the Performing Arts, Advanced Practitioner Skills, Managing a Performance, Performance Project, Advanced Performance.

**Course type:**  
Full-time

**Validated by:**  
Sheffield Hallam University

**Campus:**  
Hillsborough

**UCAS code:**  
W400

Please refer to the website for full course details, entry requirements and the most up-to-date information [www.sheffcol.ac.uk/courses](http://www.sheffcol.ac.uk/courses)

## FdA Performing Arts (Musical Theatre)

The course aims to provide students with a broad-based area of study in the field of performing arts and helps students extend their knowledge, abilities and experiences.

The course will provide a foundation for a range of careers in performing arts and within community arts organisations.

**Modules include:** Professional Roles and Practice, Performing Arts in Context, Practitioner Skills, Skills for the Workplace, Performing Arts in Practice, Research and Analysis in the Performing Arts, Advanced Practitioner Skills, Managing a Performance, Performance Project, Advanced Performance.

**Course type:**  
Full-time

**Validated by:**  
Sheffield Hallam University

**Campus:**  
Hillsborough

**UCAS code:**  
7B8V



## BA (Hons) (Top-up) Music Performance and Production

This exciting course aims to provide students with a broad ranging study of the field of music, and the opportunity to develop detailed specialist knowledge in music performance and production.

Taught by experienced staff (all practising musicians with business expertise), this course offers extensive concentration on practical skills of musicianship, composition, recording and live sound in industry-standard facilities, including a recording studio networked to fully kitted practice rooms and computer rooms with logic industry software. Strong employer links in the creative industries offer opportunities for extensive experience of performance.

**Modules include:** Major Project, Minor Project, Professional Practice.

**Course type:**  
Full-time

**Validated by:**  
The Open University

**Campus:**  
Hillsborough

**UCAS code:**  
W3W4



**BA (Hons) (Top-up) Performing Arts (Acting)**

Providing students with a broad-based area of study, this course develops specialist knowledge and skills.

With strong employer links in the creative industries and opportunities for extensive experience of performance, students will benefit from studying alongside students on Music Performance and Production, and Musical Theatre courses. Offering specialist study but also allowing a broader context ensures students are able to cope with an era of convergence in media, music and performing arts in general. The course includes workshops and discussions with organisations such as Sheffield Theatres and current practitioners working in the industry.

**Modules include:** Major Performance, Minor Project, Planning a Performance, Professional Practice.

Course type:  
Full-time

Validated by:  
The Open University

Campus:  
Hillsborough

UCAS code:  
W4W4

**BA (Hons) (Top-up) Performing Arts (Musical Theatre)**

This course aims to provide students with a broad-based area of study with a focus on musical theatre. It will help students to extend their knowledge, and expand their abilities and experiences.

Students will be given the opportunity to create performances for a variety of audiences and to forge links with local professionals in the arts community.

**Modules include:** Professional Practice, Planning a Performance, Minor Project, Major Performance, Developmental and Reflective Portfolio.

Course type:  
Full-time

Validated by:  
The Open University

Campus:  
Hillsborough

UCAS code:  
7B9V



Level	Course
6	BA (Hons) (Top-up) Performing Arts (Acting)
	BA (Hons) (Top-up) Music Performance and Production
	BA (Hons) (Top-up) Performing Arts (Musical Theatre)
5	FdA Performing Arts (Acting)
	FD Music Performance and Production
	FdA Performing Arts (Musical Theatre)

Career routes	Potential salary
Dance Teacher	£50,000
Music Therapist	£43,772
Classical Musician	£40,000
Live/Studio Sound Engineer	£40,000
Actor/Actress	Variable*
Playwright	Variable*

# SPORT



## FdSc Sport and Exercise Coaching

Interested in pursuing a career in the sport and exercise industry? This course aims to develop an understanding of academic theory in alignment with significant practical experience and coaching opportunities.

To improve employability and awareness of the industry, you will develop study skills, knowledge, professional practice and industry-specific skills through work-based learning and voluntary opportunities.

**Modules include:** Personal and Academic Development, Work-based Learning, Sport and Exercise in the UK, Leadership and Innovation in Sport and Exercise, Applied Coaching, The Science of Sport, Sport and Exercise, Coaching Enterprise, Research Project, Application of Science, Coaching Process.

**Course type:**  
Full-time

**Validated by:**  
Sheffield Hallam University

**Campus:**  
Hillsborough

**UCAS code:**  
CX61

## FdSc Physical Education and School Sport

This Foundation Degree aims to develop subject knowledge and understanding of the concepts, processes and content of the National Curriculum for Physical Education (PE) in primary, secondary and further education.

You will gain a thorough understanding of Physical Education (PE) in schools and wider communities, enabling you to play a pivotal role in improving young people's physical, social and emotional development. This degree develops your personal and interpersonal qualities that prepare you to be a skilful practitioner in educational settings.

You will also explore contemporary issues that influence the wider context of PE and school sport, putting you in the privileged position of being able to transform the lives of young people.

**Modules include:** Developing Professional Practice, Games – Practical Activities, Introduction to Thinking Sociologically and Philosophically, Sport Science, Research in Physical Education, Applied Sport, Exercise and Health Science, Socio-Cultural Impacts on PE and School Sport.

**Course type:**  
Full-time

**Validated by:**  
Sheffield Hallam University

**Campus:**  
Hillsborough

**UCAS code:**  
SP11

Level	Course	Career routes	Potential salary
5	FdSc Sport and Exercise Coaching	PE Teacher	£61,005
	FdSc Physical Education and School Sport	Sports Scientist	£60,000
		Sports Development Officer	£50,000
		Sport and Exercise Psychologist	£48,000
		Sports Physiotherapist	£45,000
		Sports Coach	£35,000

Please refer to the website for full course details, entry requirements and the most up-to-date information [www.sheffcol.ac.uk/courses](http://www.sheffcol.ac.uk/courses)

# PROTECTIVE SERVICES

## FD Public Services: Policing Studies

This exciting course integrates work-related experience with the underpinning academic knowledge needed to achieve employability in the areas of policing and justice.

Students are encouraged to establish links with the police, voluntary organisations or within the criminal justice system to complete work-based learning/industrial placement modules. The course aims to support the acquisition of knowledge and skills in criminology and criminal justice, with a particular focus on policing.

**Modules include:** Police Procedure and Professional Ethics, Introducing Criminology, Criminal Justice System, Psychology and Crime, Policing and Criminal Justice, Organisational Context, Contemporary Police and Policing, Criminological Theory, Policy and Legal Frameworks, Work-based Learning, High Risk and Serious Offenders, Research Project in Criminology.

Course type:  
Full-time

Validated by:  
Sheffield Hallam  
University

Campus:  
Hillsborough

UCAS code:  
L490

Level	Course
5	FD Public Services: Policing Studies

Career routes	Potential salary
Police Officer	£60,000
Security Manager	£38,000
Prison Officer	£38,000



# HIGHER AND DEGREE APPRENTICESHIPS

If you are progressing from an Advanced Apprenticeship or a Level 3 study programme, you may wish to continue your study with an employer on a Higher or Degree Apprenticeship. Higher and Degree Apprenticeships work in the same way as other Apprenticeships, with most of your time spent training in your job role with your employer.

Upon completion of a Higher Apprenticeship, you will gain a Level 4 or Level 5 qualification and be able to progress on to a Degree Apprenticeship where you will gain the equivalent to a full Bachelor's (Honours) Degree.

Alternatively, if you are already employed, meet the Apprenticeship entry requirements and your employer would like you to do an Apprenticeship, we can speak to your employer about the prospects of setting it all up.

Email [admissions@sheffcol.ac.uk](mailto:admissions@sheffcol.ac.uk) for more information.

All Apprenticeships are dependent on employment circumstances and cannot be applied for without a vacancy.



Level	Degree Apprenticeships
6	Chartered Legal Executive
Higher Apprenticeships	
5	Management
	Healthcare Assistant Practitioner
	Care Leadership and Management (Adult Social Care)
	HR Consultant/Partner
	Operations/Departmental Manager
4	Business and Professional Administrator
	Construction Management
	Engineering Manufacturing
	Electrical Engineering
	Software Developer
	Network Engineer
	Healthcare Science Associate

For more information about Higher or Degree Apprenticeships, contact [jobconnect@sheffcol.ac.uk](mailto:jobconnect@sheffcol.ac.uk) or ring 0114 260 2600.

## PROFESSIONAL COURSES

At The Sheffield College we offer a wide range of qualifications that aim to boost your CV and give you the theoretical knowledge you need to progress in the workplace.

If you are looking to take your career to the next level by improving your qualifications, or if you are wanting to retrain all together, these are the courses for you.

The tuition fees for these courses may be covered by 19+ Advanced Learner Loans. Please visit [www.sheffcol.ac.uk/student-support/19-advanced-loans](http://www.sheffcol.ac.uk/student-support/19-advanced-loans) for more details about financing your course.



Qualification	Level
AAT Accounting – Advanced Diploma	3
AAT Accounting – Professional Diploma	4
OCR – Business Administration NVQ Diploma	3
OCR – Business Administration NVQ Diploma	4
CILEX – Certificate in Law and Practice	3
CILEX – Professional Diploma in Law and Practice	3
CILEX – Graduate FastTrack Diploma	6
CILEX – Professional Higher Diploma in Law and Practice	6
CIPD Foundation Certificate in Human Resource Practice	3
CIPD Foundation Diploma in Human Resource Practice	3
CIPD Intermediate Certificate in Human Resource Management	5
ILM Online – Leadership and Management (Award/Certificate/Diploma)	3
ILM Online – Leadership and Management (Award/Certificate/Diploma)	4
ILM Online – Leadership and Management (Award/Certificate/Diploma)	5
ILM – Management NVQ Diploma	3
ILM – Management NVQ Diploma	4
ILM – Management and Leadership NVQ Diploma	5
ILM – Strategic Leadership and Management NVQ Diploma	7
Internal Quality Assurance – SEEYAC	4
Certificate in Personal Training	3
Teaching English to Speakers of Other Languages	3
Team Leader/Supervisor (Apprenticeship)	3

# HOW TO APPLY

**Ready to apply? If you are applying for a full-time HNC, HND, Foundation Degree, Bachelor's Degree or Top-up Degree, and are a new student to the college, please follow the below process. Filling in your application accurately will save you time as we won't have to clarify information with you.**

**1**

## Register with UCAS

If you've not applied to university before, you'll need to register for an account with UCAS ([www.ucas.com](http://www.ucas.com)). Fill in your personal details and give yourself a username, password and set some security questions in case you forget your login details.

**2**

## Log in and complete your personal details

Add to the above personal details by stating your funding options, whether you have any special needs or disabilities, or any criminal convictions.

At this stage you'll verify your email address and have the option to add a parent, guardian or adviser who can speak to UCAS on your behalf.

**3**

## Fill in additional information

UCAS will ask you to fill out things like your ethnicity, what jobs your parents do and if you've attended any summer schools. This information is just for UCAS statistics.

**4**

## Student Finance

If you've indicated you'll need help funding your course, you can fill out this page which gives UCAS permission to share details with Student Finance England, making the whole process a lot smoother and faster.

**5**

## Enter your course choices

Apply for up to 5 courses with The Sheffield College. You'll find our courses and their codes on our website and in this guide.

6

**Complete your education history**

Make sure you input all your qualifications: GCSEs, Functional Skills, A Levels, BTECs etc. If you're awaiting your results, make sure you input that qualification as result 'pending'.

7

**Employment history**

At The Sheffield College we value your personal development. In this section you get to list any full-time or part-time jobs you've had, including descriptions of those jobs. Don't worry about voluntary or unpaid work yet, save that for your personal statement!

8

**Write your personal statement**

Your chance to sell yourself and showcase your skills.

Tell us why you're applying to The Sheffield College, your ambitions and what interests you about the subject. It's worth telling us what makes you suitable – any relevant skills, experience and achievements gained from education, work or other activities (including hobbies). Remember though, you have a 4,000 character and 47 line limit.

Keep an eye on your word count and make it concise!

9

**Check it through**

Give your application a once over. Make sure you've completed and saved every section, and are happy with your personal statement. When everything is marked as complete, read and agree to the declaration which will allow you to move to the final sections.

10

**Get a reference, pay and send off**

This can be from a former teacher, tutor, adviser or professional. Anyone who knows you academically.

Applications cost £20\* (single course) or £25\* (multiple courses). Once you've paid, send it off to UCAS and keep an eye on the Track Portal which will keep you updated with the progress of your application.

You will receive alerts when:

- you're invited for an interview (course dependent)
- you receive an offer from us for your course

\*fee may change

**Part-time, professional and Apprenticeship applications**

If you are wishing to study part-time with us you'll need to apply through the application form on our website, or email [admissions@sheffcol.ac.uk](mailto:admissions@sheffcol.ac.uk) for a copy.

Fill it in and send it back to us: The Sheffield College HE Team, Hillsborough Campus, Livesey Street, Sheffield, S6 2ET.

Professional courses, Higher and Degree Apprenticeships can be applied for via our website at [www.sheffcol.ac.uk/courses](http://www.sheffcol.ac.uk/courses).

We look forward to hearing from you.

## SUMMARY OF MAIN CONTRACTUAL TERMS AND CONDITIONS

When you accept a place at The Sheffield College you agree to be bound by the Terms and Conditions of the contract. This is a summary of the main clauses. The full text is available at [www.sheffcol.ac.uk/about-us/terms-and-conditions](http://www.sheffcol.ac.uk/about-us/terms-and-conditions)

### 1. Pre-enrolment contract

This is formed when you accept the offer of a place and it secures that place for you, provided you meet any conditions stated in your offer letter. You have the right to cancel this contract within 14 days of accepting the offer.

### 2. The enrolment contract

#### a. *The enrolment contract is formed at enrolment. From this time you become liable for the following financial arrangements:*

- Payment of tuition fees - your tuition fees will not change during the course
- If you withdraw from the course before the end of Semester 1 you will be liable for payment of 50% of the annual fee
- If you withdraw after the end of Semester 1 you will be liable for payment of the whole of the annual fee
- Student Finance England will not pay your fees following withdrawal from the course

#### b. *Changes to your course*

The college will make every effort to provide the course as described on the website information. If, due to circumstances outside our control, changes have to be made to the course you will be informed in writing as soon as practicable.

#### c. *Course closure*

In rare circumstances, the college may decide to close a course up to 28 days before it is due to start. This may happen, for example, if there are insufficient applicants to provide you with a quality learning experience. In such circumstances the college will offer you an alternative place (if appropriate) or inform you of other institutions that may be able to meet your needs.

#### d. *Compliance with the regulations*

On enrolment you become subject to the regulations. These include:

- Academic and assessment
- Conduct, fitness to practice
- Expulsion and discipline
- Fees and financial
- Information technology
- Intellectual property
- Complaints and appeals

**“THE TUTORS WERE REALLY SUPPORTIVE. THEY HELPED ME FIND A JOB AFTER I GRADUATED SO I WENT STRAIGHT INTO EMPLOYMENT. I WOULD RECOMMEND THE SHEFFIELD COLLEGE TO ANYONE THINKING OF STARTING A CAREER IN CATERING. THE COURSE IS TOP QUALITY!”**

**Anna Sterling**, Owner of Cocoa Mester – and former Foundation Degree in Bakery and Patisserie Technology student

# The Sheffield College

0114 260 2600  
[info@sheffcol.ac.uk](mailto:info@sheffcol.ac.uk)  
[www.sheffcol.ac.uk](http://www.sheffcol.ac.uk)

All information is correct at time of print. Data and statistics are taken from EMSI software and the National Careers Service. If you need this guide in any other format, please get in touch.