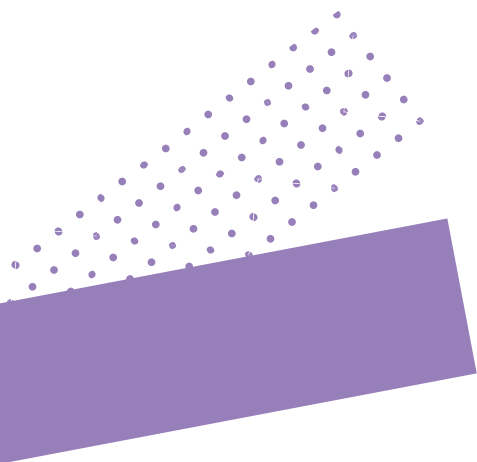
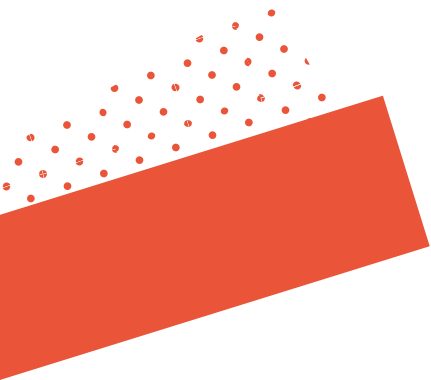




**The
Sheffield
Sixth Form**



2025-2026

A Level Guide



GO FURTHER GO FURTHER GO FURTHER GO FURTHER



ABOUT OUR A LEVELS




At The Sheffield Sixth Form, we have developed a range of new and exciting recommended career pathways across six different sectors for you to choose from.

Each sector is made up of distinct pathways that directly align to different careers. Each recommended pathway then has a carefully selected collection of related A Level subjects that you will study, should you choose to do so.

The subjects that we have selected for each sector are based on the skill sets that careers information, universities and employers are highlighting as the most important.

Students will choose one career pathway to study from the sector that interests them most. Each career pathway contains 1 or 2 core A Level subjects that have to be studied. Students will then choose their third A Level subject from the collection of related subjects in that sector.

This means that you will be studying subjects that perfectly complement each other, helping you to gain the knowledge and skills for a place at university and a successful career in the sector you choose.



Click to find out more about:



- Tips for picking A Levels
- Our location and facilities
- Student support
- Getting ready for university or work

OUR CAREER PATHWAYS

We've categorised our A Level pathways into six different sectors; business, writing, creative arts, STEM, humanities and law.

Click [here](#) to find out more about each of our career pathways.



Click to view the subjects available in each pathway.

BUSINESS

A career in business could mean management, finance, law, marketing, or even starting your own business.

WRITING

Exploring this sector could offer a career in journalism, authorship, editing and teaching to name a few.

CREATIVE ARTS

Pursuing the creative arts means you could land a career in photography, film, design or even artistry.

STEM

There are many career opportunities in this sector, with possibilities such as science, technology, engineering, maths, medical and environmental.

HUMANITIES

Studying within this pathway will uncover opportunities within politics, geography, psychology and social work, plus many more.

LAW

You could become a lawyer studying in this pathway, or kick-start a career as a police officer, a solicitor, a government official, or a charity worker, as well as many other possibilities.

ARE A LEVELS FOR YOU?

Completing A Levels means studying three different subjects alongside each other, allowing you to tailor your studies to a specific career path or university course.

KEY FEATURES

- Full-time study
- Study three subjects to tailor your learning to your career pathway
- Exam and coursework assessments
- Exclusive facilities in Sheffield city centre
- Enrichment opportunities that complement your chosen career or destination

ENTRY REQUIREMENTS

- 5 GCSEs at grade 4 or higher, including GCSE English Language and GCSE maths
- Certain A Levels will require a grade 6 or above in a specific subject

CLASSROOM AND INDEPENDENT STUDY

- Your studies will include classroom learning, work experience and independent study, all of which is important preparation for university and beyond
- Studying A Levels requires a high level of independence, as you'll be expected to take responsibility for your own learning and work hard outside of lessons to achieve the best possible grades



TUTORIALS

- At The Sheffield Sixth Form, you will meet with your Academic Tutor each week
- Your Tutorial Mentor will support you with any queries or support needs you may have
- They will also provide you with a fantastic support network and advise you about finances, exam stress and any additional learning needs that you may have

TEACHING

- Many of our excellent teaching staff have worked, or are still working, in the industry that you're trying to break into
- The industry insight that our Tutors possess means that they are able to share their knowledge and experiences with you, including what to expect when you qualify, what problems you might experience and how to overcome them
- They can also open doors for networking and arrange behind-the-scenes trips into workplaces, giving you a fantastic advantage when it comes to applying for a job



Click to find out more about studying
A Levels at The Sheffield Sixth Form

HOW TO CHOOSE A CAREER PATHWAY:

When choosing a pathway to study be sure to consider:

Your interests

- What are your ambitions? What are your strengths? What do you enjoy and like learning about?

Previous experience

- How might any volunteering or work experience you've already got help you to achieve your targets?

Your career path

- What do you want to do after your studies? Consider the careers information linked to each of the pathway choices on the website. You will find this in the 'Where Does This Lead' section for each A Level course
- If you would like to choose subject options that sit outside our career pathways, please discuss this with us, as it may be possible to accommodate bespoke subject combinations

STUDENT SUPPORT

At The Sheffield Sixth Form we have a fantastic Student Support Team who are always on hand to help you with any questions, concerns or problems that you might face while studying with us.

Our Student Support Team are based on campus and will help you with just about anything, including:

- Issues of a personal nature
- Travel to and from college
- Financial support
- In-class support
- Careers advice
- Support with exams
- Support with a learning or physical disability



Click to find out how we can support you.

HOW TO APPLY

1

Head to sixthform.sheffcol.ac.uk and click the sector that interests you most.



2

Choose one of our specialist career pathways from that sector.

3

Select one additional A Level to add to your pathway.

**CLICK
HERE** 

Click to view our available pathways.

OPEN DAYS

We hold Open Days throughout the year so you don't have to just take our word for why you should join us.

We want you to see for yourself!

Tuesday

12TH

November 2024
4pm – 7pm
City Campus

Thursday

23RD

January 2025
4pm – 7pm
City Campus

Thursday

6TH

March 2025
4pm – 6pm
City Campus

**CLICK
HERE** 

Click to find out more about
our Open Days.





If you require this guide in any other format,
please contact marketing@sheffcol.ac.uk

For all information about The Sheffield Sixth Form,
please visit sixthform.sheffcol.ac.uk

 /TheSheffieldSixthForm

 @thesheffieldsixthform

 @Sheff6thForm

