

**The  
Sheffield  
College**

# ES AG ES AG

**2022-2023**

**Access to University  
Level Course Guide**



# CONTENTS

Welcome	05
What is an access diploma?	07
What are the benefits?	08
Paying for your qualification	12
How we can support you	13
What can you study?	15
How to apply	38
What's next?	40



# WELCOME

**At The Sheffield College, our mission is transforming lives through learning. That's exactly what our Access to Higher Education Diplomas can do for you if you have the will to succeed. Access qualifications have been specifically designed for adults who have been out of education for some time.**

These amazing qualifications can mark a major turning point in the lives of the inspirational adult learners who study them. It takes guts and determination to return to the classroom as an adult learner, and it is entirely natural to feel a little daunted by it.

That's why I have enormous respect for anyone who decides to take that leap. But our students tell us that facing up to that challenge has been more than worth it. Access qualifications prepare adult learners, who do not have traditional academic qualifications such as A Levels, for study at degree level.

Access qualifications last one-year and are full-time. They lead to credits recognised by colleges, universities and employers and are a Level 3 qualification.

If you dream of going to university but think that it's not possible because you left education a while ago, then an Access qualification could be for you. Our diplomas will provide you with a great opportunity to go further with your studies and the career you've dreamt of.

On successful completion of an access qualification, you can stay on at the College or move on to university to study for a degree. Universities have helped to develop the diplomas, so they are appropriate and feed into their entry requirements.

Your mental health and well-being are vitally important to us. We're committed to giving you the support you need to succeed during your studies and beyond. We have various initiatives in place to support you, no matter what issues you might be facing either at home or at college.

Now is the time to put aside any doubts that you may have and let us support you to make that bold step of returning to education. It may transform your life, and help you go higher onto a university level qualification.



**Angela Foulkes**  
Chief Executive and Principal  
The Sheffield College

**“ALL MY TUTORS  
WERE EXCELLENT  
AND VERY  
SUPPORTIVE  
THROUGHOUT.”**

**Alex Toulson,**  
Former Access to HE Health Science student

# WHAT IS AN ACCESS DIPLOMA?

**Have you always wanted to study for a degree or diploma at university, but didn't think you had the qualifications to do so?**

Access to Higher Education Diplomas – to give them their full title – are one-year qualifications that help you gain the relevant entry requirements for a university level course or degree.

They have been specifically designed for adults who have been out of education for a period of time and are looking for an opportunity to retrain for a new career, re-engage with education and study at university.

Our access qualifications can be studied in a number of key sectors. It is important to note that you do not need to have prior experience of working or studying in these sectors before you start with us.

To be able to study an Access to HE Diploma, you will need to have the desired entry requirements, which are usually a GCSE grade C/4 in English Language and Maths. Please also be aware that some of our qualifications have additional requirements which are listed on the course pages towards the back of this guide.

When you've decided what you want to study, successfully complete the qualification and university awaits!

**Don't have the entry requirements yet?** Our Pre-access qualifications support your progression onto an Access to Higher Education Diploma the following year by improving your study skills and helping you gain GCSEs in English Language and Maths.

# WHAT ARE THE BENEFITS ?

One of the best things about studying an access qualification is the chance to pursue a new passion or career without having prior experience or education.

With an exciting variety of subjects available, all of which are linked to career pathways, you have a rare opportunity to gain a place at university in an industry that you've either never studied before or have limited knowledge of.

All in one year!

At The Sheffield College you can study:

---

Business

---

Computing

---

Digital Media

---

Education

---

Health Professions

---

Humanities, English  
and Social Science

---

Law

---

Nursing

---

Policing

---

Science

---

Pre-Access

---



There are so many benefits and reasons why you should study an Access to HE Diploma. Here are our favourites:

---

## **ACCESSIBLE ENTRY REQUIREMENTS**

Access qualifications are all about making opportunities available to those who are ready to work for them.

For the majority of our qualifications, you will only require a grade C/4 or above in GCSE English Language and Maths to get started, although some do have additional requirements as shown on the course pages.

If you don't have the exact requirements, our Pre-access qualifications will help support you to gain them. Our Tutors will advise you on this at the interview stage.

---

## **NO PREVIOUS EXPERIENCE REQUIRED**

Never studied a formal qualification in your chosen subject before? No problem.

We help you get to grips with the basics before picking up the pace and developing your knowledge to a standard that will help you transition smoothly into university study.

---

## **PERFECT FOR RETRAINING**

Thinking of retraining for a new career but wanting to do it as quickly as possible?

In addition to having accessible entry requirements and requiring no previous experience, access qualifications only take one year to complete!

That means you could be training for your new career at university exactly one year on from starting your new studies.

## UNIVERSITY RECOGNISED QUALIFICATIONS

Each year, approximately 25,000 students achieve an Access to Higher Education Diploma and progress to degree courses across the UK.

Universities have helped to design these qualifications so that they develop the skills you need and feed directly into their entry requirements.

## IT DOESN'T MATTER IF YOU'VE BEEN OUT OF EDUCATION FOR A WHILE

The whole point of an access qualification is to ease you back into a classroom environment and prepare you for university. Yes, it will be challenging, but we've taken all this into consideration and will support you as you rediscover your academic skills and introduce you to new subjects. We'll support you to secure a place on a degree.



**Ian Critchley**  
Access to HE Lecturer

**"Helping students gain the qualification that gets them into university and building their self esteem is massively important to me."**



---

## NO UPPER AGE LIMIT

We completely understand that people have different priorities at different stages of their lives. Circumstances change for each and every one of us, and it may be that now is the perfect time for you to follow your university dream.

As long as you're over the age of 19, we'd love to hear from you!

---

## FANTASTIC FINANCIAL SUPPORT

For some students, tuition fees will be fully funded. However, if you are required to pay for your qualification, a 19+ Advanced Learner Loan will help to cover your Access to Higher Education Diploma tuition fees. More information about that on the next page.

---

## GRADUATE FROM UNIVERSITY AND YOUR LOAN COULD BE WRITTEN OFF

The best news is that if you progress to and complete an eligible university level course, your 19+ Advanced Learner Loan repayment is written off. This means you'll only have to pay off your university student loan – which you don't have to do until you're earning over £2,274 a month (before tax and other deductions)\*!

If you need independent financial advice, please visit [www.gov.uk/student-finance](http://www.gov.uk/student-finance) or [www.gov.uk/advanced-learner-loan](http://www.gov.uk/advanced-learner-loan)



\*Correct at time of publishing

# PAYING FOR YOUR QUALIFICATION

**Paying for your qualification might be easier than you think. There are multiple funding options available depending on your personal circumstances.**

## Full funding

If you are aged 19–23 and this is your first full Level 3 qualification, you will be entitled to full funding to cover all of your tuition fees at no cost to you.

## 19+ Advanced Learner Loan

If you are aged 19–23 and have already achieved a full Level 3 qualification, or are aged 24 and over, you could be eligible for a loan.

19+ Advanced Learner Loans are not means tested or dependent on credit checks. When you progress and complete an eligible university level course, the 19+ Advanced Learner Loan is completely wiped meaning you will only have to pay back your university student loan.

## Repayments\*

After you've finished your qualification, you will only start repaying your loan when you earn over £524 a week or £2,274 a month (before tax and other deductions).

Repayments will be 9% of your earnings over that threshold.

Example monthly 19+ Advanced Learner Loan repayments:

£11 a month when you earn  
£28,800 per year

If you need independent financial advice please visit [www.gov.uk/student-finance](https://www.gov.uk/student-finance) or [www.gov.uk/advanced-learner-loan](https://www.gov.uk/advanced-learner-loan)

\* Correct at time of publishing

# HOW WE CAN SUPPORT YOU

Our Student Support Team are committed to doing everything they can to help ease your problems, stresses and concerns, and are on hand with advice and guidance on a number of issues, including:

study support

personal issues

disabled access and support

travel to and from The Sheffield College

tuition fees and personal finances

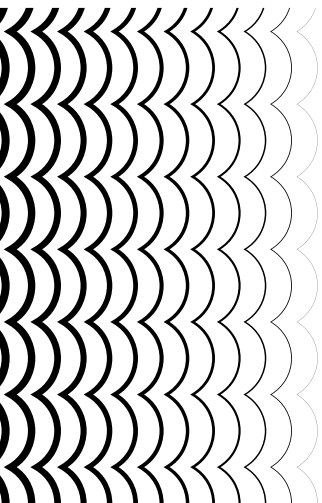
childcare

## Childcare

If you are a student parent aged 20 or over, you may also be eligible to receive help with the cost of childcare whilst studying with us.

We have nurseries at two of our main campuses – City and Hillsborough – providing high-quality educational and social experiences for children aged 6 months to 7 years.

To find out more about funding and the support that you could be eligible for please visit: [www.sheffcol.ac.uk/student-support](http://www.sheffcol.ac.uk/student-support)





**Matthew Nedved**  
Former Access to HE student

**"The Sheffield College provided me with the opportunity to exceed my limits and improve my skills."**

# COURSES

---

**BUSINESS**

---

**COMPUTING**

---

**DIGITAL MEDIA**

---

**EDUCATION**

---

**HEALTH PROFESSIONS**

---

**HUMANITIES, ENGLISH  
AND SOCIAL SCIENCE**

---

**LAW**

---

**NURSING**

---

**POLICING**

---

**SCIENCE**

---

**PRE-ACCESS**

# BUSINESS

**From international trade to business communication and finance, the Access to HE Diploma in Business is ideal for those students looking for a route on to a business degree or a career in business or management.**

Throughout the qualification you will study various aspects of business, such as:

---

Marketing

---

Economics

---

Business Planning

---

You will also prepare yourself for university by developing skills in academic writing, presentations and numeracy.

Our Tutors are specialists in different functions of business and will provide you with a broad understanding of how businesses operate in today's economy.

You'll also have the support of a Tutorial Mentor who can help guide you through the process of applying to the university course of your choice.



To find the most up-to-date information or to apply for this subject, please visit our website

[www.sheffcol.ac.uk/courses](http://www.sheffcol.ac.uk/courses)





# WHAT NEXT?

After completing this qualification, you'll have a variety of university level study options available to you, such as:

HNC/D Business at  
The Sheffield College

BA (Hons) Business and  
Marketing

BA (Hons) International  
Business Management

BA (Hons) Business and  
Finance

Career routes	Potential annual salary
Business Project Manager_____	<b>£75,000</b>
Business Development Manager_____	<b>£64,000</b>
Marketing Executive_____	<b>£50,000</b>
Event Manager_____	<b>£40,000</b>
Charity Fundraiser_____	<b>£36,000</b>

**Entry requirements:** Grade C/4 or above in GCSE English Language and Mathematics

# COMPUTING

**It's a digital world out there and with the computing industry growing year on year, an Access to HE Diploma in Computing could be just the thing to propel you into this exciting and rapidly expanding sector.**

The qualification will provide you with a good overview of the main disciplines within the computing industry, as well as preparing you for further study at university.

You'll study:

---

Software Development

---

Web Skills and Multimedia

---

Computer Systems

---

You will also learn how to organise your study time and how to work in groups. These are all essential skills for university.

There's also an opportunity to study Maths to A Level standard, providing you with the option to study computer science at some of the UK's top universities.

You'll be taught in dedicated computer suites by staff who have worked in the industry; so you'll be well prepared to make the jump into employment or university when the time comes.

To find the most up-to-date information or to apply for this subject, please visit our website



[www.sheffcol.ac.uk/courses](http://www.sheffcol.ac.uk/courses)

# WHAT NEXT?

After completing this qualification, you'll have a variety of university level study options available to you, such as:

HNC/D in Computing at  
The Sheffield College

BA (Hons) Computing Science

BA (Hons) Cyber Security

BSc Computer Networks  
and Security

Career routes	Potential annual salary
Computer Software Developer_____	<b>£70,000</b>
IT Project Manager_____	<b>£70,000</b>
Forensic Computer Analyst_____	<b>£60,000</b>
App Developer_____	<b>£55,000</b>
Cyber Intelligence Officer_____	<b>£50,000</b>

**Entry requirements:** Grade C/4 or above in GCSE English Language and Maths

# DIGITAL MEDIA



**The Sheffield College has developed a national reputation through its delivery of photography and media programmes and our Access to HE Diploma in Digital Media is no different.**

Aimed at adult students who wish to enter a career in the creative industries, this qualification focuses on the development of your photography and media skills in preparation for application to university level study.

You will be encouraged to develop a professional-standard portfolio based on your chosen specialism. The qualification begins with an introductory 'skills build' tuition and, as you progress, you will produce outcomes based on a specialist pathway.

Professional practice is at the centre of the programme and you will be encouraged to gain experience in working with clients on live projects.



To find the most up-to-date information or to apply for this subject, please visit our website



[www.sheffcol.ac.uk/courses](http://www.sheffcol.ac.uk/courses)

# WHAT NEXT?

After completing this qualification, you'll have a variety of university level study options available to you, such as:

FdA Media Production  
at The Sheffield College

FdA Photography  
at The Sheffield College

BA (Hons) Digital Media

BA (Hons) Film

Career routes	Potential annual salary
Broadcast Engineer_____	<b>£50,000</b>
Photographer_____	<b>£45,000</b>
Video Editor_____	<b>£45,000</b>
Live Sound Engineer_____	<b>£40,000</b>
TV or Film Director_____	<b>VARIABLE</b>

**Entry requirements:** Grade C/4 or above in GCSE English Language

Experience in photography or media (a portfolio of work will be required at interview) and basic ICT skills

# EDUCATION



**An Access to HE Diploma in Education is ideal preparation for anyone wanting to train as a teacher or study education-related courses at university.**

This qualification has a strong teaching focus, but also aims to give you a well-rounded knowledge of the education landscape by covering modules in:

---

Education Policy

---

English

---

Social Policy/Sociology

---

It will be an advantage if you already have some experience in a teaching or education capacity prior to starting the course, as well as strong English and maths skills.



**Samantha Hemingway**  
Former Access to HE student

**"I took a year out of education to have my son before returning to complete my Access to HE Diploma at The Sheffield College. After my qualification I went on to study Social Policy and Criminology at the University of Sheffield."**

To find the most up-to-date information or to apply for this subject, please visit our website

[www.sheffcol.ac.uk/courses](https://www.sheffcol.ac.uk/courses)

# WHAT NEXT?

After completing this qualification, you'll have a variety of university level study options available to you, such as:

FD Education & Learning  
Support at The Sheffield College

BA (Hons) Education Studies

BA (Hons) Childhood  
Education Studies

BA (Hons) Early Years and  
Childhood Studies

Career routes	Potential annual salary
University Lecturer_____	<b>£54,000</b>
Secondary School Teacher_____	<b>£41,605</b>
Primary School Teacher_____	<b>£41,604</b>
E-learning Developer_____	<b>£40,000</b>
Early Years Teacher_____	<b>£36,961</b>

**Entry requirements:** Grade C/4 or above in GCSE English Language and Maths

# HEALTH SCIENCE PROFESSIONS



**The Health Science Professionals Access to HE Diploma is ideal for those wishing to pursue further study (or a career) in any allied health profession or biological science.**

Students will study units common to a variety of health professions, including:

---

Nutrition

---

Chemistry in Society

---

Endocrine System

---

Genetic Inheritance

---

You will study alongside students looking to progress into a variety of health professional roles. This will give you an understanding of the basic knowledge required to work within any allied health profession.

You will also develop academic skills in preparation for university.



**Jennifer Poulton**

Former Access to HE Health Science student

**"Studying the Health Science Access to HE Diploma made me believe that I could become a nurse."**

To find the most up-to-date information or to apply for this subject, please visit our website

[www.sheffcol.ac.uk/courses](http://www.sheffcol.ac.uk/courses)



# WHAT NEXT?

After completing this qualification, you'll have a variety of university level study options available to you, such as:

FD Professional Practice  
in Health and Social Care  
at The Sheffield College

BSc (Hons) Occupational  
Therapy

BSc (Hons) Midwifery

BSc (Hons) Nursing

Career routes	Potential annual salary
Sports Physiotherapist	£45,000
Midwife	£45,000
Occupational Therapist	£45,000
District Nurse	£45,000
Social Worker	£40,000

**Entry requirements:** Grade C/4 or above in GCSE English Language and Maths

# HUMANITIES, ENGLISH AND SOCIAL SCIENCE



**If you want to go to university to study social sciences (like psychology or sociology) or humanities, then this could be the qualification for you.**

This qualification gives you the academic skills required for university (essay writing, research skills and delivering presentations), whilst also giving you the flexibility to study the subjects that really interest you.

Alongside a core curriculum, you'll have the option to choose one of three pathways that includes subjects from a variety of areas, for example:

---

English Language

---

History

---

Psychology

---

Contemporary Social Issues

---

Sociology

---

The advantage of this qualification is that it lets you pick a pathway of subjects that will give you access to a really diverse range of university and employment options.



**Justin Espoir Machongo**

Access to HE Humanities, English and Social Sciences student

**"This is the most interesting thing I have studied. After completing my course to the best of my abilities, I would like to work for the United Nations within the UNHCR."**

To find the most up-to-date information or to apply for this subject, please visit our website



[www.sheffcol.ac.uk/courses](http://www.sheffcol.ac.uk/courses)

# WHAT NEXT?

After completing this qualification, you'll have a variety of university level study options available to you, such as:

BA (Hons) Counselling

BA (Hons) Sociology

BA (Hons) English Language

BSc (Hons) Psychology

## Career routes

## Potential annual salary

Data Analyst	£60,000
Newspaper Journalist	£50,000
Clinical Psychologist	£45,000
Social Worker	£40,000
Community Development Worker	£36,000

**Entry requirements:** Grade C/4 or above in GCSE English Language

# LAW



**Do you have dreams of entering the legal profession?  
This qualification provides you with the opportunity  
to progress to university in law and law-related fields.**

You will be given an excellent introduction to law and legal practice, and develop knowledge and skills that will enable you to undertake complex research tasks and work with clients.

This qualification will cover key aspects of law and legal practice, putting you at the forefront of the key debates within the profession. You will begin your studies by understanding the key components of law and then swiftly move on to tackle more complex subjects.

You will study topics which include:

---

Exploring Elements of a Crime

---

Law and Morality

---

Law of Homicide

---

Law of Contract

---

Law of Negligence

---



To find the most up-to-date information or to apply for this subject, please visit our website



[www.sheffcol.ac.uk/courses](http://www.sheffcol.ac.uk/courses)

# WHAT NEXT?

After completing this qualification, you'll have a variety of university level study options available to you, such as:

Foundation Degree  
in Policing Studies at  
The Sheffield College

BA (Hons) Criminal Justice  
and Criminology

LLB (Hons) Law

LLB (Hons) Law  
(International Law)

## Career routes

## Potential annual salary

Solicitor	£100,000
Legal Executive	£60,000
Crown Prosecutor	£43,000
Paralegal	£40,000
Criminologist	£36,000

**Entry requirements:** Grade C/4 or above in GCSE English Language and Maths

# NURSING



**Over the course of one year, this qualification will equip you with the skills and knowledge you'll need to study nursing and other healthcare-related courses at university level.**

You'll develop your knowledge of healthcare by studying subjects such as:

---

Health Psychology

---

Body Structure Function

---

Non-infectious Conditions

---

At the same time, you'll prepare to take on the academic demands of university study by developing skills which will teach you how to research and put your findings into an essay format.

Whilst the majority of assessments will take the form of an on-going portfolio of coursework, you'll also have the opportunity to deliver presentations and group work which are often key methods of assessment at university.



To find the most up-to-date information or to apply for this subject, please visit our website



[www.sheffcol.ac.uk/courses](http://www.sheffcol.ac.uk/courses)

# WHAT NEXT?

After completing this qualification, you'll have a variety of university level study options available to you, such as:

FD Professional Practice in Health and Social Care at The Sheffield College

BSc Midwifery

BSc Mental Health Nursing

BSc (Hons) Adult Nursing

## Career routes

## Potential annual salary

Mental Health Nurse_____	<b>£45,000</b>
Midwife_____	<b>£45,000</b>
Occupational Health Nurse_____	<b>£45,000</b>
Practice Nurse_____	<b>£45,000</b>
Children's Nurse_____	<b>£40,000</b>

**Entry requirements:** Grade C/4 or above in GCSE English Language and Maths

# POLICING

**This one-year qualification is ideally suited to students looking to further their career prospects in policing and the criminal justice sector.**

Since 2020, the police recruitment process requires at least a degree-level qualification by the time you complete your probation.

If you're keen to join the police but are worried that your grades or lack of qualifications may be holding you back from going to university, our Access to HE Diploma in Policing could be perfect for you.

You will delve into subjects in law, criminology, sociology and psychology. Examples of units include:

---

The Powers of the Police

---

Theories of Crime and Deviance

---

Conformity and Obedience

---

Theoretical Approaches to Criminology

---



To find the most up-to-date information or to apply for this subject, please visit our website



[www.sheffcol.ac.uk/courses](http://www.sheffcol.ac.uk/courses)



# WHAT NEXT?

After completing this qualification, you'll have a variety of university level study options available to you, such as:

Foundation Degree in Policing Studies at The Sheffield College

BA (Hons) Criminology

BA (Hons) Criminology and Criminal Justice

BSc (Hons) Professional Policing

Career routes	Potential annual salary
Police Officer_____	<b>£41,000</b>
Security Manager_____	<b>£38,000</b>
Prison Officer_____	<b>£38,000</b>
Scene of Crime Officer_____	<b>£38,000</b>
Forensic Collision Officer_____	<b>£38,000</b>

**Entry requirements:** Grade C/4 or above in GCSE English Language and Maths

# SCIENCE



**Access to HE Diploma in Science provides you with the knowledge and skills needed to progress to university courses in any area that requires a science background.**

A broad range of units are available for you to choose from so that you can tailor the qualification to suit your needs and interests.

Most students choose units from three of the following subjects, although it is possible to choose either a broader or a more specialised programme of study:

---

Biology

---

Chemistry

---

Environmental Science

---

Physics

---

Psychology

---

Most units will have exams but the qualification will also include practical reports, essays, projects, study skills and presentations. Applicants will be invited to an interview prior to an offer of a place on the course being made.



**Joshua Dexter**

Former Access to HE  
Diploma (Science) student

**"In the space of a year  
I have gone from having a  
rudimentary understanding  
of the sciences, two GCSEs  
and no A Levels, to being  
accepted to study an  
integrated Master of  
Chemistry at Durham  
University – all thanks  
to the amazing help  
and support I received  
at The Sheffield College."**

To find the most up-to-date information or to apply for this subject, please visit our website



[www.sheffcol.ac.uk/courses](http://www.sheffcol.ac.uk/courses)

# WHAT NEXT?

After completing this qualification, you'll have a variety of university level study options available to you, such as:

BSc (Hons) Biomedical Science

BSc (Hons) Environmental Science

BSc (Hons) Forensics

BSc (Hons) Radiotherapy

Career routes	Potential annual salary
Medical Physicist_____	<b>£52,000</b>
Climate Physicist_____	<b>£50,000</b>
Biologist_____	<b>£50,000</b>
Pharmacist_____	<b>£45,000</b>
Radiographer_____	<b>£45,000</b>

**Entry requirements:** Grade C/4 or above in GCSE Maths, English Language and Science

# PRE-ACCESS

**If you don't yet have the entry requirements for one of our Access to HE Diplomas, a Pre-access qualification allows you to develop your skills in preparation for studying one the following year.**

Alongside studying modules specific to the pathway you are studying, you will also study for GCSEs in English Language and/or Maths, and build on your existing study skills

---

## PRE-ACCESS HUMANITIES

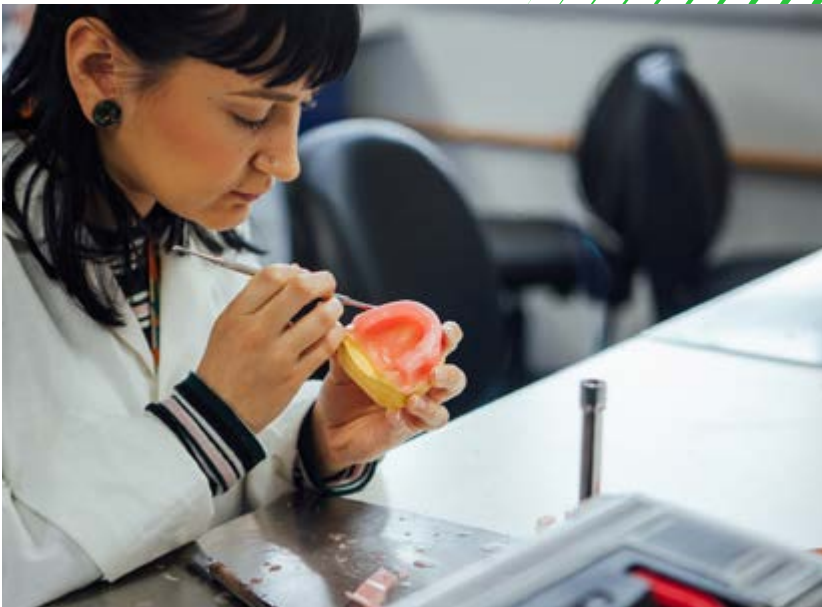
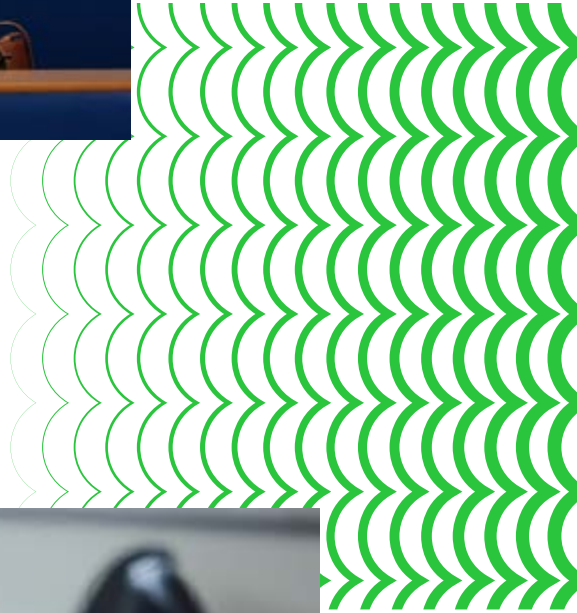
This qualification is fantastic preparation for one of our humanities-related access qualifications as you will be introduced to new subjects which include Law and Order, Psychological Perspectives and Critical Thinking.

---

## PRE-ACCESS HEALTH SCIENCE PROFESSIONS

This qualification is fantastic preparation for one of our health and science-related access qualifications as you will be introduced to new subjects which include key concepts in health, chemistry and biology.

**Entry requirements:** It is recommended that you have Level 2 Functional Skills in English and Maths. Please also check the individual entry requirements for the access course you wish to study after.



# HOW TO APPLY

1

Find the subject you want to apply for by visiting [www.sheffcol.ac.uk/courses](http://www.sheffcol.ac.uk/courses)

2

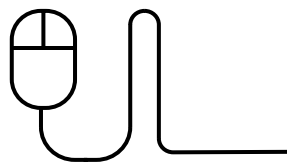
Select the subject you're interested in and read through the relevant information.

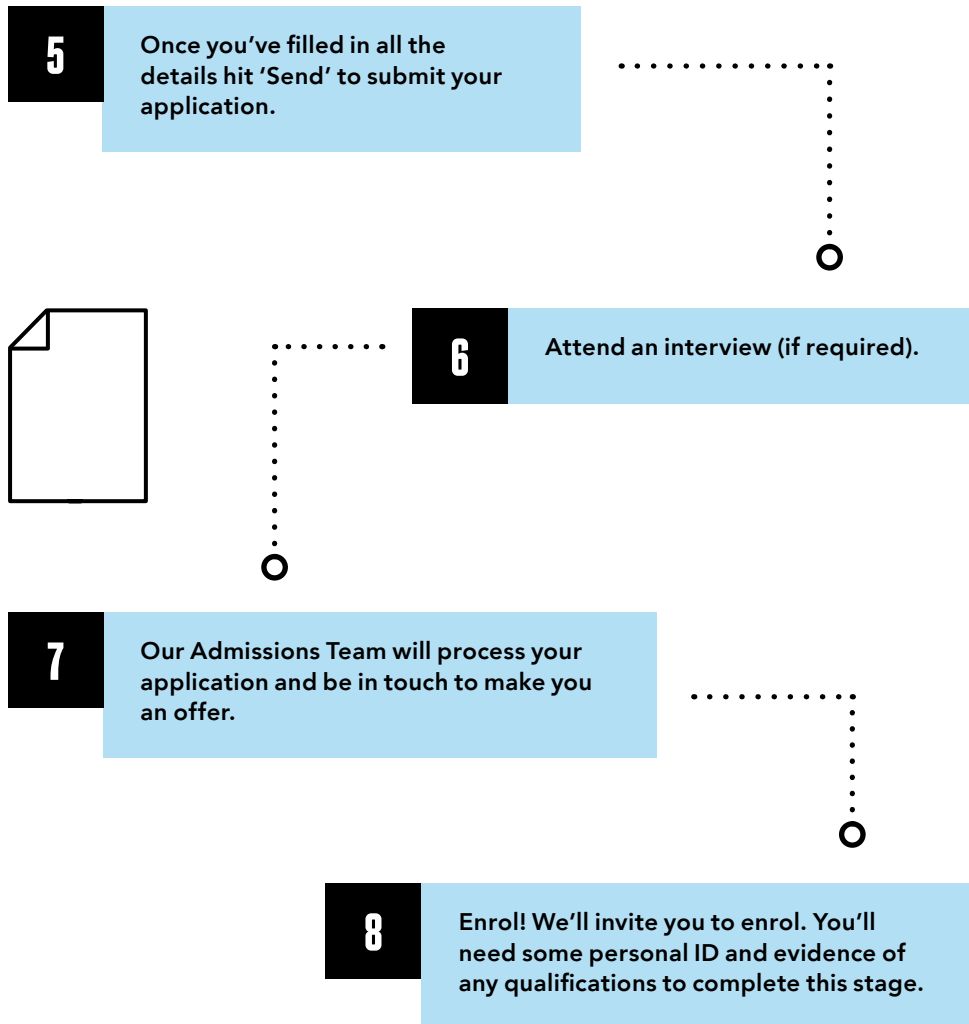
3

When you've found the subject that's right for you, click the 'Apply now' button.

4

Create an account and follow the step-by-step application form – make sure you give us the right email address and phone number in order for us to contact you about your application.





To view all of the access qualifications we offer, select 'Access to University Level' from the filter dropdown menu in the search box on our website.

[www.sheffcol.ac.uk/courses](http://www.sheffcol.ac.uk/courses)

# PROGRESSING TO UNIVERSITY LEVEL STUDY

**Did you know you can study for your degree with us once you've completed your access qualification?**

**There are lots of reasons to continue studying with us, here are a few of our favourites:**

---

## **Less debt**

It's simple. Our tuition fees cost less than traditional universities and you'll still graduate with the same qualification.

---

## **Top class Tutors**

Our Tutors haven't always been teachers. They have loads of experience working in their chosen industry, giving you invaluable insight into what skills today's employers are looking for.

---

## **Wide range of career driven courses**

With courses in everything from computing to health and social care, there's something for just about everyone. And what's better, all of our courses focus on giving you the skills you need to find the job you want.

---

## **Smaller class sizes**

Our class sizes are far smaller than at some of the mainstream universities, which is great news for you. You'll receive more contact time with your Tutor, plus one-to-one support, giving you the greatest opportunity to achieve the best degree possible.

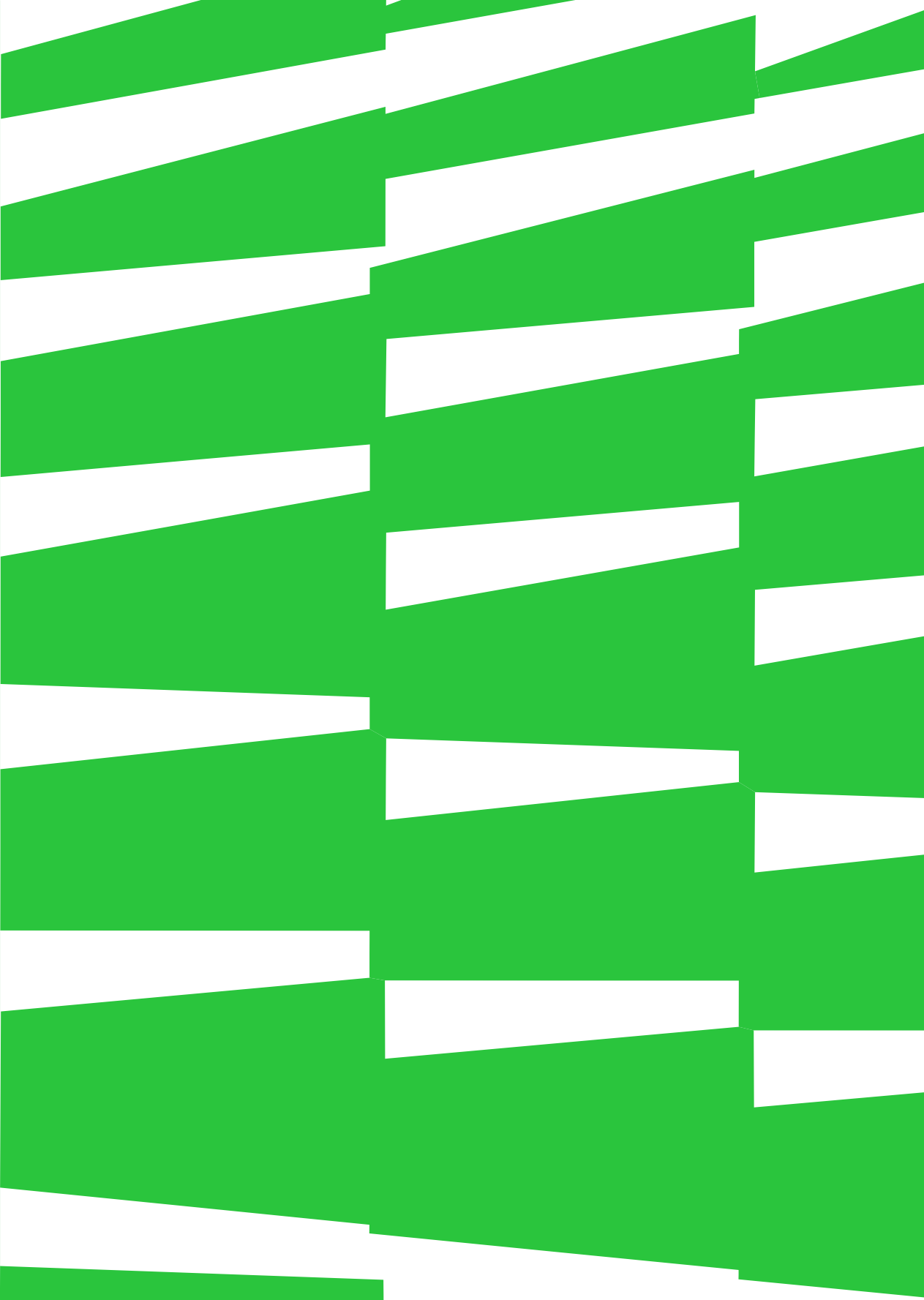
---

## **Ready for the workplace**

All our courses are designed to make you ready for your chosen career. Our courses come with real work placements or live projects set by employers, which will boost your CV and impress your future employer.

Contact [admissions@sheffcol.ac.uk](mailto:admissions@sheffcol.ac.uk) for more information about our degrees.





# The Sheffield College

## Contact us

To view and apply for our latest  
courses, please visit:

[www.sheffcol.ac.uk/access-to-university](http://www.sheffcol.ac.uk/access-to-university)

For more information or to speak to one  
of our expert team, please contact us on:

**0114 260 2600**  
**info@sheffcol.ac.uk**