

**The
Sheffield
College**



**Transforming
lives through
learning**



**OUR STRATEGIC
PLAN 2025–2030**





Contents

Welcome	04
Our impact	06
Our students	08
Our qualifications	10
Our partners	11
Our Strategic Plan 2025–2030	12
Learning	14
People	15
Sustainability	16
Partnerships	17
Celebrating success	18

Welcome from our Chief Executive and Principal



Angela Foulkes CBE

Chief Executive and Principal,
The Sheffield College

We are ambitious for our college, our students and the city, and are proud to play a key role in the local economy transforming lives through learning and supporting employers.

Here in Sheffield, we support thousands of young people and adults every year, inspiring them to go further. We work with hundreds of employers providing skills solutions.

Being inclusive and putting our students first irrespective of their background, qualifications and career ambitions is at the heart of everything we do.

Our Strategy Plan for 2025 to 2030 outlines our priorities on Learning, People, Sustainability and Partnerships.

The new strategy reinforces our ongoing commitment to be a great place to learn and work, and a responsible, sustainable organisation that is a trusted partner.

Since the launch of the last college strategy from 2021 to 2025, we have made significant progress on our 'good to great' journey.

During that time, Ofsted recognised the overall effectiveness of the college as 'good' including our high quality teaching and learning and meeting the region's skills needs.

We have also been commended by ranking highly in the National Centre for Diversity's Top 100 Inclusive UK Employers Index.

Developing strong partnerships in the city enhances our impact and has resulted in innovative work at Peaks Campus and the Advanced Technology Centre.

We want to go faster in achieving our ambitions for our students and staff as we continue to champion not only our college but the positive impact of the further education sector and its vital role.

We will continue to lobby for our college and the future of education skills and training in our city and region.

We look forward to what we will achieve with key partners during the next five years.

Welcome from our Chair of Governors

John Mothersole

Chair of Governors,
The Sheffield College



The Sheffield College is a very significant part of the fabric of this wonderful city and its success.

It is a privilege to witness the transformational impact that the college has on so many lives and to be part of shaping its future direction.

The governing body's remit includes supporting college leaders to identify their top priorities through the development and implementation of a strategic plan.

Whilst it is exciting to look to the years ahead, it is also important to reflect on the significant progress that the college has made during the lifecycle of the previous strategic plan.

The last few years have been shaped by enhancing the student experience and the quality of teaching and learning, and being an inclusive organisation.

From Ofsted's recognition that the college is a good place to study to a raft of exciting partnerships and initiatives, these achievements are testament to the dedication and efforts of staff at all levels.

As we look ahead to the next five years, we are committed to building on our achievements. It is important that the college continues to focus on its ambitions whilst being well positioned to deal with challenges and seize opportunities.

A high proportion of our students are from the city; many continue to live and work here after completing their education and training with us.

Whatever the future holds, we can be sure that a skilled and well qualified community will be essential and the college will continue to be a major part of achieving that.

Our impact

The Sheffield College is a large General Further Education College in the South Yorkshire Mayoral Combined Authority, providing high quality academic, technical and vocational training to enhance qualifications, skills and employability across the region.

We are very proud of the communities we serve and feel privileged to be an anchor institution in the region.

We serve communities in:

-  Sheffield
-  Barnsley
-  Rotherham
-  Doncaster



GOOD

Our Ofsted
grade is **Good**

To give you an idea of the scale of the communities that we serve:

1.4 million
people live in
South Yorkshire

Sheffield's Year 12 population is growing and is set to peak in **2028/29** at
6,271

41%
of the South
Yorkshire population
reside in Sheffield

63%
of the South
Yorkshire
population
are working age

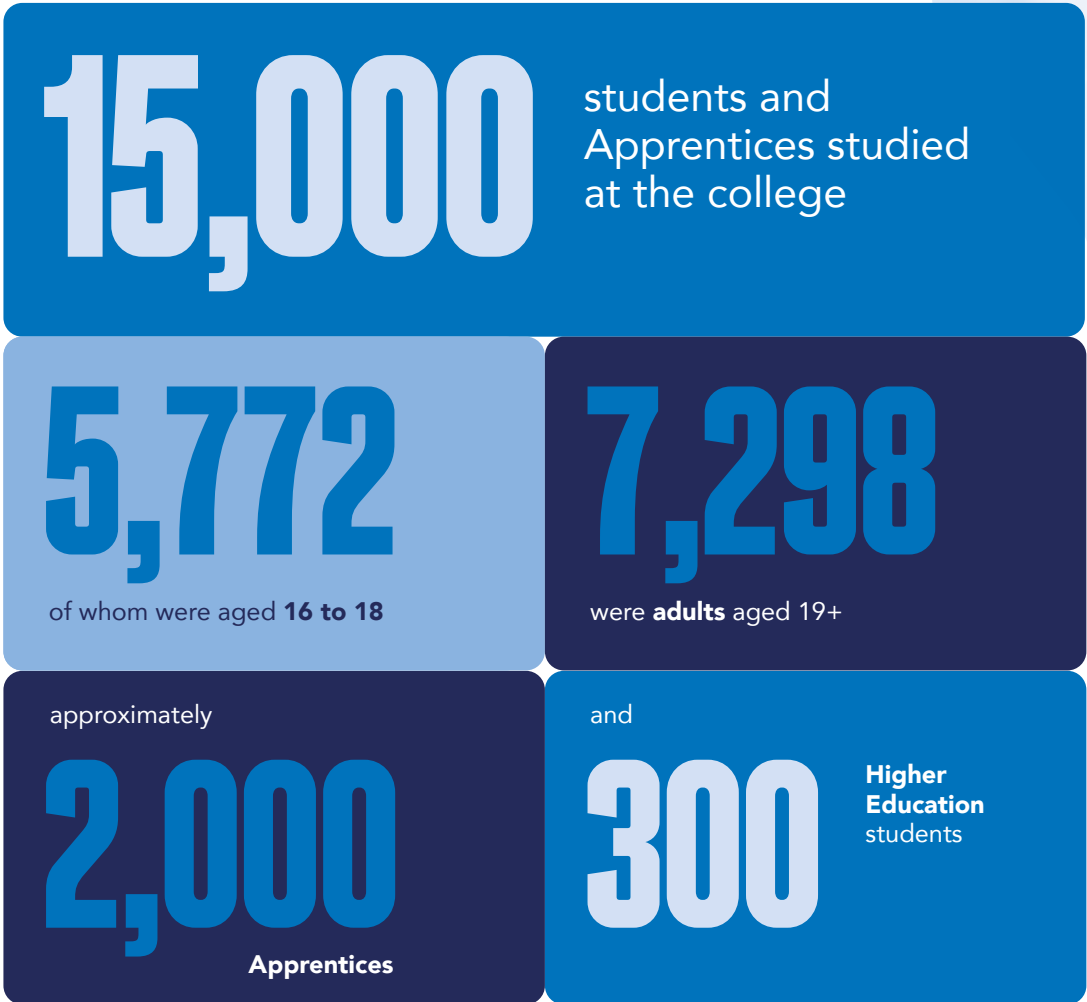
We have
approximately
1,300
staff and are a
Foundation Living
Wage employer



Our students

Our student population draws from a wide range of areas across Sheffield with 70% of our students residing in deprived postcode areas.

Here is a breakdown of our student profile as taken at the end of the academic year in 2024:



Our success rates

Further Education

84% National Achievement Rate

87% The Sheffield College Achievement Rate

Higher Education

93% Pass Rate Target

94% UC Sheffield / The Sheffield College

Around

870

employers are involved in our **Apprenticeship** programmes

CLICK ME



to see a more detailed profile of our staff and students



Our qualifications

We deliver around 500 externally awarded qualifications, including:

Access to Higher Education Diplomas	Higher Technical Qualifications
A Levels	Honours Degrees
Apprenticeships	T Levels
Foundation Degrees	Vocational Diplomas



Apprenticeships+



The Sheffield Sixth Form



Adults



Bloom
Preparation for Adulthood
at The Sheffield College

We work with around

1,500

employers

who provide Apprenticeships,
experience of work, industry
placements or other work-related
activity to our students.

Our partners

CLICK ME



to hear from
some of
our partners



Our Strategic Plan clearly outlines our aims and ambitions as a college.

The strategy has four key themes against which progress and impact will be measured.



College Strategy 2025–2030



LEARNING

A great place to **learn**



PEOPLE

A great place to **work**

Transforming
lives through
learning



PARTNERSHIPS

A trusted **partner** in
the city and wider region



SUSTAINABILITY

A responsible and
sustainable organisation

Together we empower
people to thrive

LEARNING

A great place to **learn**

1. Teaching and learning

We will enable students to succeed, progress and meet future challenges by providing high quality teaching, learning and assessment

2. Curriculum

We will design, develop and implement a curriculum that supports the aspirations of our students and prepares them for success in both work and life

3. Diversity and inclusion

We will celebrate diversity and provide a safe, respectful and inclusive environment where all students can thrive

4. Innovation

We will embrace innovation and the use of technology to enhance teaching and learning, and deliver a curriculum that keeps pace with industry practice

5. Student voice

We will listen to our students and ensure that their voices are used to shape the college experience



PEOPLE

A great place to **work**

1. Building Team Sheffcol

We will continue to build Team Sheffcol so that our people are proud to work here, and others aspire to

2. Working together

We will listen to each other, work together and celebrate our differences so that everyone feels respected and that they belong

3. Developing you

We will enable and empower our people to continually learn, improve and try new ways of doing things

4. Your health and well-being

We will support our people to thrive in and out of work

5. Valuing you

We will celebrate success and provide rewards and recognition for our staff so that they feel valued and part of something important



SUSTAINABILITY

A responsible and **sustainable** organisation

1. Market

We will increase the number of students achieving success through sustainable growth in our key markets

2. Infrastructure

We will provide great facilities and services (physical and virtual) for teaching, learning and assessment

3. Environmental sustainability

We will integrate environmental sustainability into the curriculum and continue our efforts to achieve net zero in our operations

4. Financial health

We will maintain underlying strong financial health throughout the strategy

5. Value for money

We will demonstrate value for money for every area in delivering excellent and efficient provision and services



PARTNERSHIPS

A trusted **partner** in the city and wider region

1. Employers

We will be the premium education and training partner of choice for employers

2. Stakeholders

We will actively partner with stakeholders and civic institutions to drive transformative prosperity and enhance well-being for all residents of Sheffield and South Yorkshire

3. Education

We will proactively collaborate with other educational organisations to design and deliver skills solutions that address local, regional and national needs

4. Community

We will partner with communities and voluntary organisations in the city to foster social cohesion and inclusivity

5. Enterprise

We will promote a culture of innovation, enterprise and celebration to support the development of a dynamic city and region



Celebrating success – our achievements



Winner 2024



NCFE Aspiration Awards
2024 Winner
Support Staff of the Year



CRAFT GUILD
OF CHEFS
Accredited
College Restaurant
of the Year 2024



Student Experience FE/HE Award
Finalist 2025
Innovation Award
Finalist 2025
Diversity, Equality and Inclusion Award
Finalist 2024
Student Experience FE/HE Award
Finalist 2024



Health and Social Care
Lyon 2024
World Skills Finalist
Health and Social Care
Manchester 2024
World Skills UK Foundation Gold



CLICK ME



to keep up to
date with all our
achievements

The Sheffield College

TEAM
SHEFFCOL

For more information about our Strategic Plan, to get involved with The Sheffield College or to hear from the people who make Team Sheffcol so special, please visit

**[www.sheffcol.ac.uk/about-us/
mission-vision-and-values](http://www.sheffcol.ac.uk/about-us/mission-vision-and-values)**

All information accurate as of March 2025.

Please contact **marketing@sheffcol.ac.uk** if you require this guide in an alternative format.