

**The
Sheffield
College**

**ACCESS TO
UNIVERSITY
LEVEL
COURSES**

Access to University
Level Course Guide

2020-2021

WELCOME

Do you dream of going to university but think that it's not possible because you left education a while ago?

Now's the time to think again! Our Access to University Level courses provide you with a great opportunity to go further with your studies and the career that you've always dreamt of.

Access courses prepare adult students, who do not have traditional academic qualifications such as A Levels, for study at university.

Upon successful completion of an access course you can go on to college or university to study for a degree.

There's an exciting range of subjects to choose from, including Business, Computing, Criminology and Forensics, Digital Media, Health Professions, Humanities, Nursing, Science and Sport.

Universities have helped to develop the courses, so they are appropriate and feed into their entry requirements.

The courses last one-year and are full-time. They lead to credits recognised by colleges, universities and employers, and are a Level 3 qualification.

Now is the time to return to education and go further at The Sheffield College.



Angela Foulkes
Chief Executive
and Principal



CONTENTS

What is an access course?	05
What are the benefits?	06
Financing your course	10
Student support	11
Courses	13
How to apply	34
What's next?	36

“THE SHEFFIELD COLLEGE WERE FANTASTIC IN HELPING ME TO ACHIEVE MY GOALS.”

Sammy Bryan, Occupational Therapist and Former Access to University Level student

WHAT IS AN ACCESS COURSE?

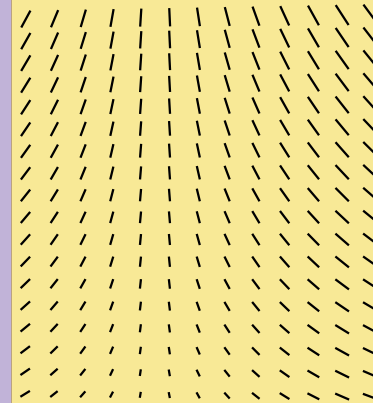
Have you always wanted to study for a degree or diploma at university, but didn't think you had the qualifications to do so?

Access to Higher Education Diplomas – to give them their full title – are a one year course that help you gain the relevant entry requirements for a university level course.

They have been specifically designed for adults who have been out of education for some time and don't require previous experience in the industry you wish to study in.

To get started you will need to meet our entry requirements which are usually a GCSE grade C/4 in English Language and Maths. Please check course pages for individual requirements.

When you've decided which access course you want to do, successfully complete it and university awaits!



Don't meet the entry requirements? Read about our pre-access courses on page 32 which support your progression onto an access course the following year.

WHAT ARE THE BENEFITS ?

We have fantastic courses on offer at The Sheffield College, with a variety of subjects available. You can study in the following areas and take advantage of all the benefits an access course with us has to offer!

Business

Computing

Criminology and Forensics

Digital Media

Health Professions

Humanities, English and Social Science

Nursing

Science

Sport

NO UPPER AGE LIMIT OR PREVIOUS EXPERIENCE

Access courses are for anyone aged 19+ and don't require you to have worked or studied in the industry you want to break into.

ACCESSIBLE ENTRY REQUIREMENTS

For most access courses, a grade C/4 or above in GCSE English Language and Maths is all you need to get started.

We want to make opportunities available to those ready to work for them.

If you don't have the exact requirements, our pre-access courses will help support you to gain them.

Your course leader will advise you on this at the interview stage. Please check individual subjects for specific entry requirements.

IT DOESN'T MATTER IF YOU'VE BEEN OUT OF EDUCATION FOR A WHILE

The whole point of an access course is to ease you back into a classroom environment and prepare you for university. Yes, it will be challenging, but the course has taken all this into consideration. You won't be the only one feeling nervous!

We will help you to rediscover your academic skills and introduce you to new subjects. We're trying to help you secure a place on a degree.

UNIVERSITY RECOGNISED QUALIFICATIONS

Universities have helped to develop these courses so that they develop the skills you require and feed directly into their entry requirements.

Each year, approximately 25,000 students achieve an Access to Higher Education Diploma and progress to degree courses across the UK.

You could be next!

FANTASTIC FINANCIAL SUPPORT

For some students, course fees will be fully funded. However, if you are required to pay for the course, a 19+ Advanced Learner Loan will cover your Access to Higher Education Diploma course fees. More information about that on the next page. But...

You could have your loan written off

The best news is that if you progress to and complete a university level course, the 19+ Advanced Learner Loan repayment is written off. This means you'll only have to pay off your university student loan – which you don't have to do until you're earning over £2,143 a month (before tax and other deductions)!

If you need independent financial advice, please visit www.gov.uk/student-finance or www.gov.uk/advanced-learner-loan



FINANCING YOUR COURSE

Paying for your course might be easier than you think. There are a couple of funding options available dependent on your circumstances.

Full funding

If you are aged 19–23 and this is your first full Level 3 qualification, you will be entitled to funding to cover all of your tuition fees at no cost to you.

19+ Advanced Learner Loan

If you are aged 19–23 and have already achieved a full Level 3 qualification, or are aged 24 and over, you could be eligible for a loan.

19+ Advanced Learner Loans are not means tested or dependent on credit checks. When you progress and complete a university level course, the 19+ Advanced Learner Loan is completely wiped meaning you will only have to pay back your university student loan.

One more added bonus – progress onto a university level course at The Sheffield College and you will benefit from lower tuition fees than at traditional university.

Repayments

After you've finished your course you will only start repaying your loan when you earn over £494 a week or £2,143 a month (before tax and other deductions).

Repayments will be 9% of your earnings over that threshold.

Example monthly 19+ Advanced Learner Loan repayments:

£23 a month when you earn
£28,800 per year

If you need independent financial advice please visit www.gov.uk/student-finance or www.gov.uk/advanced-learner-loan

STUDENT SUPPORT

Now that paying for your course is covered, what about the necessities of completing it? We can provide financial support with things such as travel, exam fees, essential course costs, and membership or registration to professional organisations related to your course.

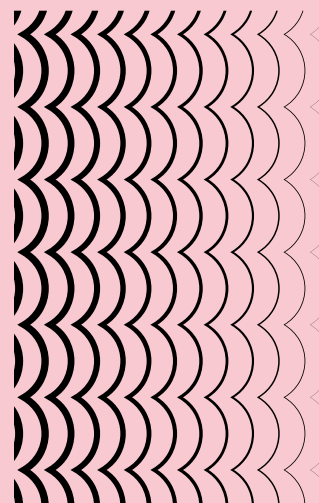
Each application for financial support is judged on its own merit. How much you receive will depend on your personal circumstances. Please contact financial-support@sheffield.ac.uk for more information.

Childcare

If you are a student parent aged 20 or over, you may also be eligible to receive help with the cost of childcare whilst studying with us.

We have nurseries at two of our main campuses – City and Hillsborough – providing high-quality educational and social experiences for children aged 6 months to 7 years. Our Hillsborough Campus nursery is currently rated as 'Outstanding' by Ofsted.

To find out more about funding and the support that you could be eligible for please visit: www.sheffield.ac.uk/student-support





COURSES

BUSINESS	14
COMPUTING	15
CRIMINOLOGY & FORENSICS	16
DIGITAL MEDIA	18
EDUCATION	20
HEALTH PROFESSIONS	22
HUMANITIES, ENGLISH & SOCIAL SCIENCE	24
NURSING	26
SCIENCE	28
SPORT	30
PRE-ACCESS	32



BUSINESS

From international trade to business communication and finance, the Access to HE Diploma in Business is ideal for those students looking for a route on to a business degree or a career in business or management.

Throughout the course you will study various aspects of business, such as:

Marketing

Economics

Business Planning

You will also prepare yourself for university by developing skills in academic writing, presentations and numeracy.

Our tutors are specialists in different functions of business and will provide you with a broad understanding of how businesses operate in today's economy.

You'll also have the support of a Tutorial Mentor who can help guide you through the process of applying to the university course of your choice.

Once you've finished the course you'll have a variety of options available to you.

You might want to progress on to an Honours Degree at university, study for a HND or, if you want to carry on at college, why not study HNC Business with us?

Entry requirements: Grade C/4 or above in GCSE English Language and Maths

COMPUTING

It's a digital world out there and with the computing industry growing year on year, an Access to HE Diploma in Computing could be just the thing to propel you into this exciting and rapidly expanding sector.

The course will provide you with a good overview of the main disciplines within the computing industry, as well as preparing you for further study at university.

You'll study:

Software Development

Web Skills and Multimedia

Computer Systems

You will also learn how to organise your study time and how to work in groups. These are all essential skills for university.

There's also an option to study Maths to A Level standard, providing you with the option to study computer science at some of the UK's top universities.

You'll be taught in dedicated computer suites by staff who have worked in the industry; so you'll be well prepared to make the jump into employment or university when the time comes.

Alternatively, you could choose to stay at The Sheffield College to study a HNC in Computing.

Entry requirements: Grade C/4 or above in GCSE English Language and Maths

CRIMINOLOGY & FORENSICS*

This one-year course focuses on criminology and forensics, and is ideally suited to those wishing to pursue a career in the criminal justice sector.

Taught by experienced lecturers, this course will help you gain the academic skills and subject knowledge required to study at undergraduate level.

You will learn about crime by understanding key aspects of law, criminology, science and psychology. The course also places strong emphasis on students having suitable work/volunteer experience within the sector.

Students will study a range of criminological topics, such as:

Psychological Profiling to the Courts System

Law and Mortality

The Court System and Personnel

Successful completion of this course will enable you to apply for university level courses, including Foundation Degree in Policing Studies at The Sheffield College.

*Subject to approval

Entry requirements: Grade C/4 or above in GCSE English Language and Maths



DIGITAL MEDIA

The Sheffield College has developed a national reputation through its delivery of photography and media programmes across a broad range of courses, and our Access to HE Diploma in Digital Media is no different.

Aimed at adult students who wish to enter a career in the creative industries, this course focuses on the development of your photography and media skills in preparation for application to university level study.

You will be encouraged to develop a professional-standard portfolio based on your chosen specialism. The course begins with an introductory 'skills build' tuition and, as you progress, you will produce outcomes based on a specialist pathway.

Professional practice is at the centre of the programme and you will be encouraged to gain experience in working with clients on live projects.

Students who complete this course can progress to study at university or choose to study their degree with us at The Sheffield College on our Foundation Degree in Photography or Media Production.

Entry requirements: Grade C/4 or above in GCSE English Language
Experience in photography or media (a portfolio of work will be required at interview) – Basic ICT skills



EDUCATION*

An Access to HE Diploma in Education is ideal preparation for anyone wanting to train to be a teacher or study education-related courses at university.

This course has a strong teaching focus, but also aims to give you a well-rounded knowledge of the education landscape by covering modules in:

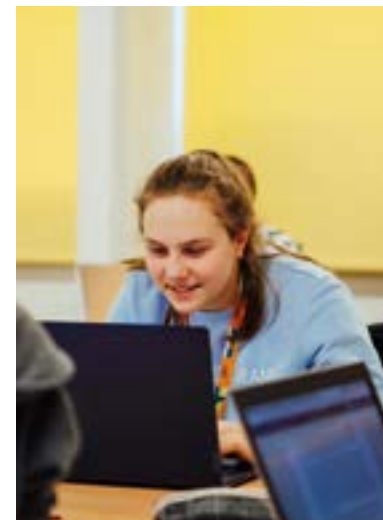
Education Policy

English

Social Policy/Sociology

It will be an advantage if you already have some experience in a teaching or education capacity prior to starting the course, as well as strong English and Maths skills.

After successfully completing this course you can study the Foundation Degree in Early Years Education at The Sheffield College or other education, teaching and humanities-related courses at university.



*Subject to approval

Entry requirements: Grade C/4 or above in GCSE English Language and Maths



Samantha Hemingway
Former Access to University Level student

"I took a year out of education to have my son before returning to complete my Access to HE Diploma at The Sheffield College. After my course I went on to study Social Policy and Criminology at the University of Sheffield."

HEALTH PROFESSIONS

The Access to HE Diploma in Health Professions is ideal for those wishing to pursue further study (or a career) in any allied health profession or biological science.

Students will study units common to a variety of health professions, including:

- _____
- Nutrition
- _____
- Chemistry in Society
- _____
- Endocrine System
- _____
- Genetic Inheritance

You will study alongside students looking to progress into a variety of health professional roles.

This will give you an understanding of the basic knowledge required to work within any allied health profession. You will also develop academic skills in preparation for university.

Students who have successfully completed this course have gone on to study a wide range of subjects such as:

- _____
- General Health Professions
- _____
- Midwifery
- _____
- Nursing
- _____
- Nutrition and Dietetics
- _____
- Physiotherapy
- _____
- Radiography
- _____
- Sport and Exercise Science

We offer a range of university level programmes at The Sheffield College. Go to www.sheffcol.ac.uk/courses/university-level to see where you can progress with us.



Entry requirements: Grade C/4 or above in GCSE English Language and Maths



Sammy Bryan
Occupational Therapist and former Access to University Level Student

"I chose to study Access to Health Professions because I decided to be an Occupational Therapist which requires going to university, and I didn't have the grades from my A Levels."

HUMANITIES, ENGLISH & SOCIAL SCIENCE

If you want to go to university to study social sciences (like psychology or sociology) or humanities, then this could be the course for you.

Humanities, English and Social Science gives you the academic skills required for university (essay writing, research skills and delivering presentations), whilst also giving you the flexibility to study the subjects that really interest you.

Alongside a core curriculum, you'll have the option to choose one of three pathways that includes subjects from a variety of areas, for example:

English Language

History

Psychology

Contemporary Social Issues

Sociology

The advantage of this course is that it lets you pick a pathway of subjects that will give you access to a really diverse range of university and employment options.

Previous students have progressed to study courses such as counselling and law at university, and the employment opportunities are just as varied. We've had students go on to work in teaching, social care and community development.

Entry requirements: Grade C/4 or above in GCSE English Language



Justin Esipoir Machongo
Access to HE Diploma in Humanities, English and Social Sciences student

"This course is the most interesting thing I have studied. After completing my course to the best of my abilities, I would like to work for the United Nations within the UNHCR."



NURSING

Over the course of one year, this qualification will equip you with the skills and knowledge you'll need to study nursing and other healthcare-related courses at university level.

You'll develop your knowledge of healthcare by studying subjects such as:

Health Psychology

Body Structure Function

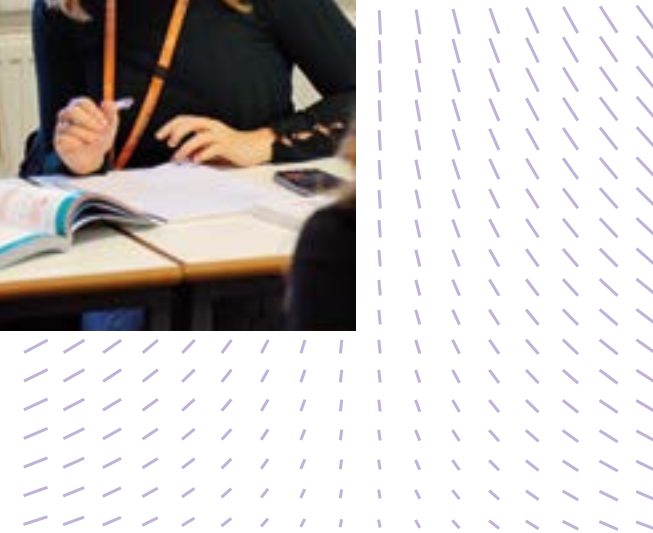
Non-infectious Conditions

At the same time, you'll prepare to take on the academic demands of university study by developing skills which will teach you how to research and put your findings into an essay format.

Whilst the majority of assessments will take the form of an on-going portfolio of coursework, you'll also have the opportunity to do presentations and group work which are often key methods of assessment at university.

Students who have completed this course in the past have gone on to study mental health nursing, adult nursing, midwifery, physiotherapy and even social care at university level.

If you don't want to study at university yet but would like to study for a degree, you can progress on to the Foundation Degree Professional Practice in Health and Social Care (offered by The Sheffield College in partnership with Sheffield Hallam University); a two-year course that would enable you to join a healthcare related degree in the second year of university.



Entry requirements: Grade C/4 or above in GCSE English Language and Maths

SCIENCE

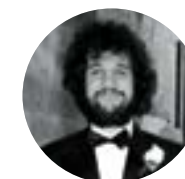
The Access to HE Diploma (Science) course provides you with the knowledge and skills needed to progress to university courses in any area that requires a science background.

A broad range of units are available for you to choose from so that you can tailor the course to suit your needs and interests, and be thoroughly prepared for your chosen university course. Most students choose units from three of the following subjects, although it is possible to choose either a broader or a more specialised programme of study:

- _____
- Biology
- _____
- Chemistry
- _____
- Environmental Science
- _____
- Human Biology
- _____
- Mathematics
- _____
- Physics
- _____
- Psychology

Access to HE Diploma (Science) is an intensive course with frequent deadlines to be met. Most units will have exams but the course will also include practical reports, essays, projects, study skills and presentations. Applicants will be invited to an interview prior to an offer of a place on the course being made.

Previous students on this course have gone on to study and pursue careers in a broad range of subjects, including Biochemistry, Biology, Biomedical Science, Chemistry, Dietetics, Engineering (all types), Environmental Science, Forensics, Midwifery, Nursing, Nutrition, ODP, Paramedics, Pharmacy, Physics, Physiotherapy, Psychology, Radiography, Radiotherapy and many more.



Joshua Dexter
Former Access to HE Diploma (Science) student

“In the space of a year I have gone from having a rudimentary understanding of the sciences, two GCSEs and no A Levels, to being accepted to study an integrated Master of Chemistry at Durham University – all thanks to amazing help and support I received at The Sheffield College.”

Entry requirements: Grade C/4 or above in GCSE Maths, English Language and Science

SPORT

This course is a great way for anyone who has been out of education to get the knowledge and skills they need to progress on to a university level course in sport or related areas.

Throughout this course, you'll study:

Health and Fitness

Anatomy

Exercise Physiology

Sport Psychology

Coaching

As a sports student you'll also get to use and learn in our fantastic sports facilities at Hillsborough Campus, including a fitness suite, sports hall and 3G sports pitches.

If you're hoping to progress on to a university level course, you'll also benefit from developing your academic study skills through different styles of assessment like research projects, essays and reports, and group presentations.

You'll also have access to academic support and guidance from your Tutorial Mentor who will help you with your application to university or further study.

One of the best things about this course is how varied your options are once you've finished your studies. Former students have gone on to study degree courses in nutrition, sports therapy and even sports journalism.

You could also choose to start on our very own Foundation Degree in Sport and Exercise Coaching, or perhaps our Foundation Degree in Physical Education and School Sport.



Entry requirements: Grade C/4 or above in GCSE Maths and English Language

PRE-ACCESS

If you don't yet have the entry requirements for one of our access courses, this Level 2 qualification allows you to develop your skills in preparation for study at Level 3 the following year.

PRE-ACCESS HUMANITIES

This course is fantastic preparation for one of our humanities-related access courses as you will be introduced to new subjects which include Law and Order, Psychological Perspectives and Critical Thinking.

Alongside the above subjects, you will also study for GCSEs in English Language and/or Maths, and build on your existing study skills.

PRE-ACCESS HEALTH SCIENCE PROFESSIONS

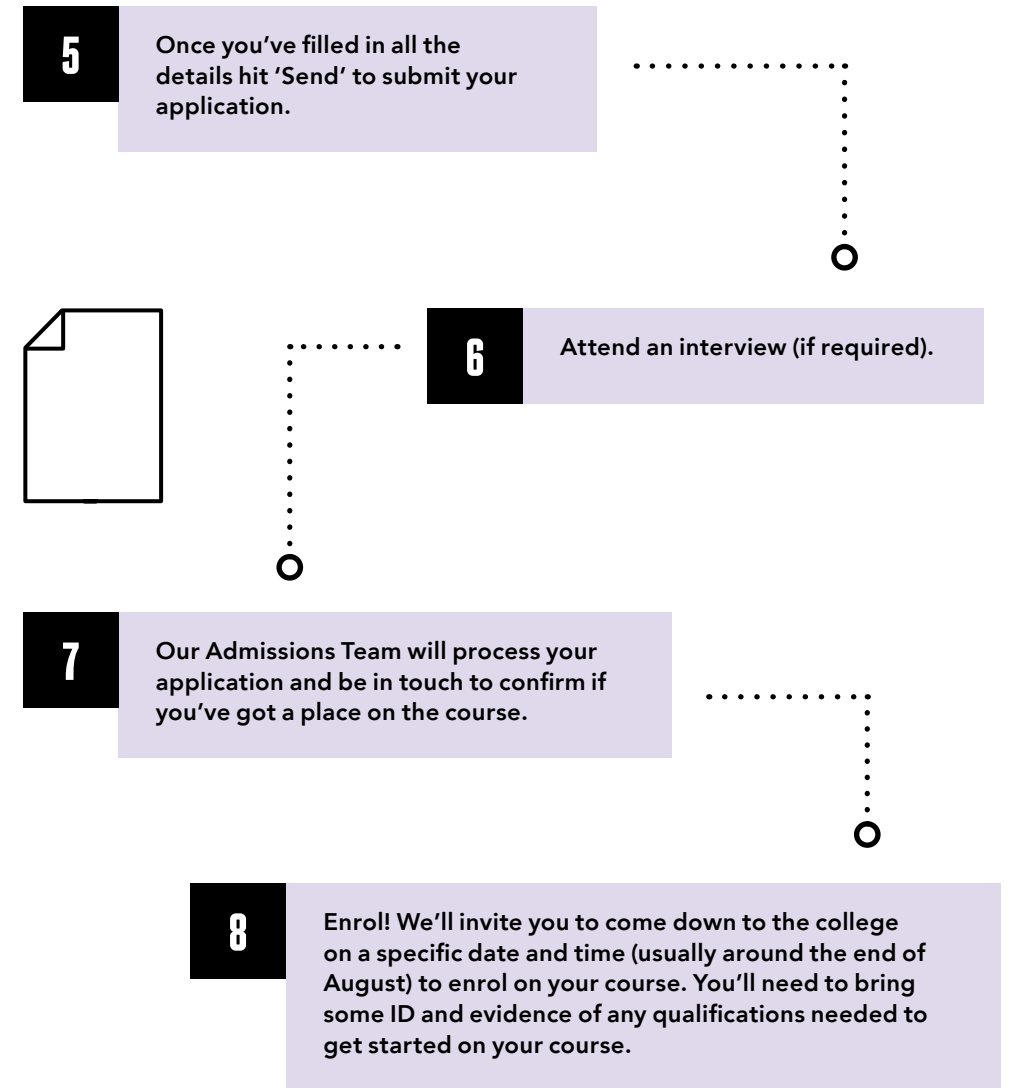
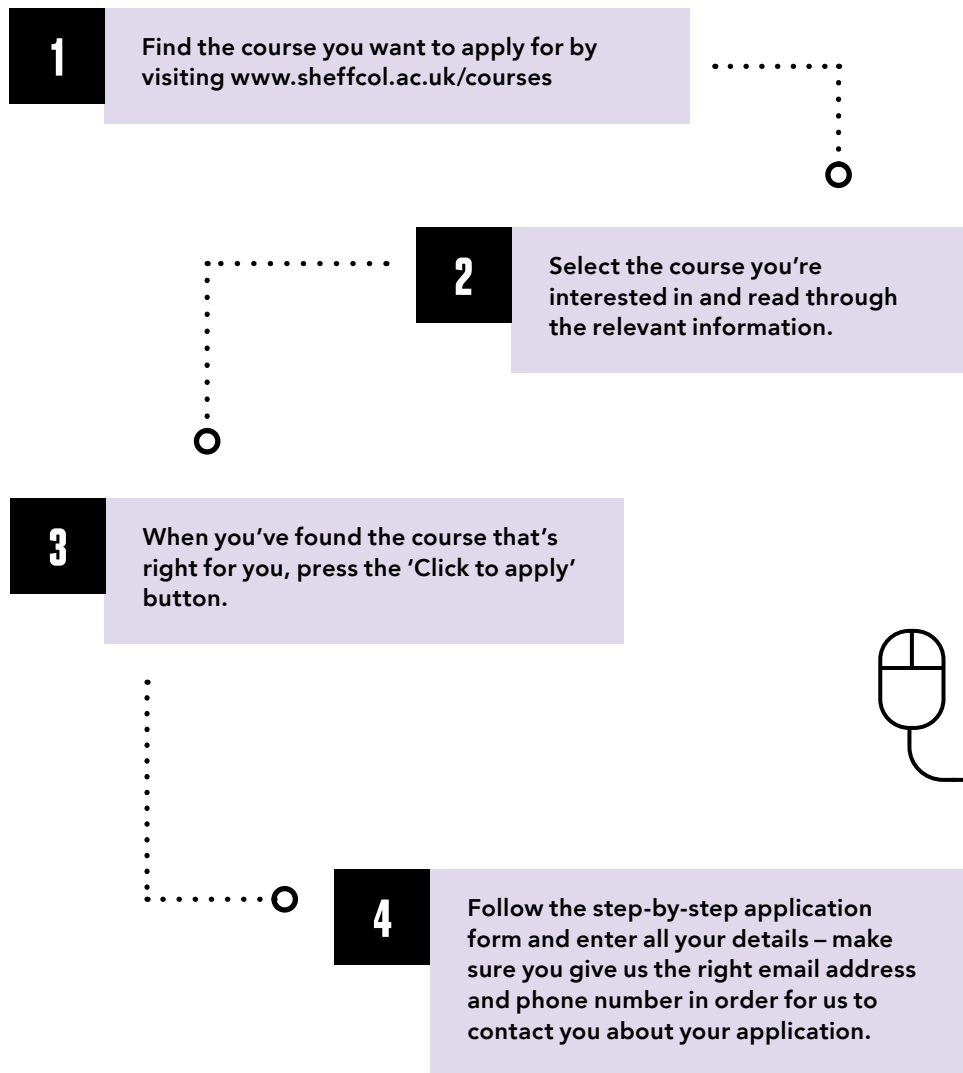
This course is fantastic preparation for one of our health and science-related access courses as you will be introduced to new subjects which include key concepts in health, chemistry and biology.

Alongside the above subjects, you will also study for GCSEs in English Language and/or Maths, and build on your existing study skills.

Entry requirements: It is recommended that you have Level 2 Functional Skills in English and Maths. Please also check the individual entry requirements for the access course you wish to study after.



HOW TO APPLY



To view all of the access courses we offer, select 'Access to University Level' from the filter drop-down menu in the search box on our website.

www.sheffcol.ac.uk

WHAT'S NEXT?

Did you know you can study for your degree with us once you've completed your access qualification?

There are lots of reasons to continue studying with us, here are a few of our favourites:

Less debt

It's simple. Our tuition fees cost less than traditional universities and you'll still graduate with the same qualification.

Top class tutors

Our tutors haven't always been teachers. They have loads of experience working in their chosen industry, giving you invaluable insight into what skills today's employers are looking for.

Wide range of career driven courses

With courses in everything from Computing to Health and Social Care, there's something for just about everyone. And what's better, all of our courses focus on giving you the skills you need to find the job you want.

Smaller class sizes

Our class sizes are far smaller than at some of the mainstream universities, which is great news for you. You'll receive more contact time with your tutor, plus one-to-one support giving you the greatest opportunity to achieve the best degree possible.

Ready for the workplace

All our courses are designed to make you ready for your chosen career. Our courses come with real work placements or live projects set by employers, which will boost your CV and impress your future employer.

Contact admissions@sheffcol.ac.uk for more information on our degrees.

Contact us

To view and apply for our latest courses, please visit:

www.sheffcol.ac.uk/access

For more information or to speak to one of our expert team, please contact us on:

0114 260 2600

info@sheffcol.ac.uk